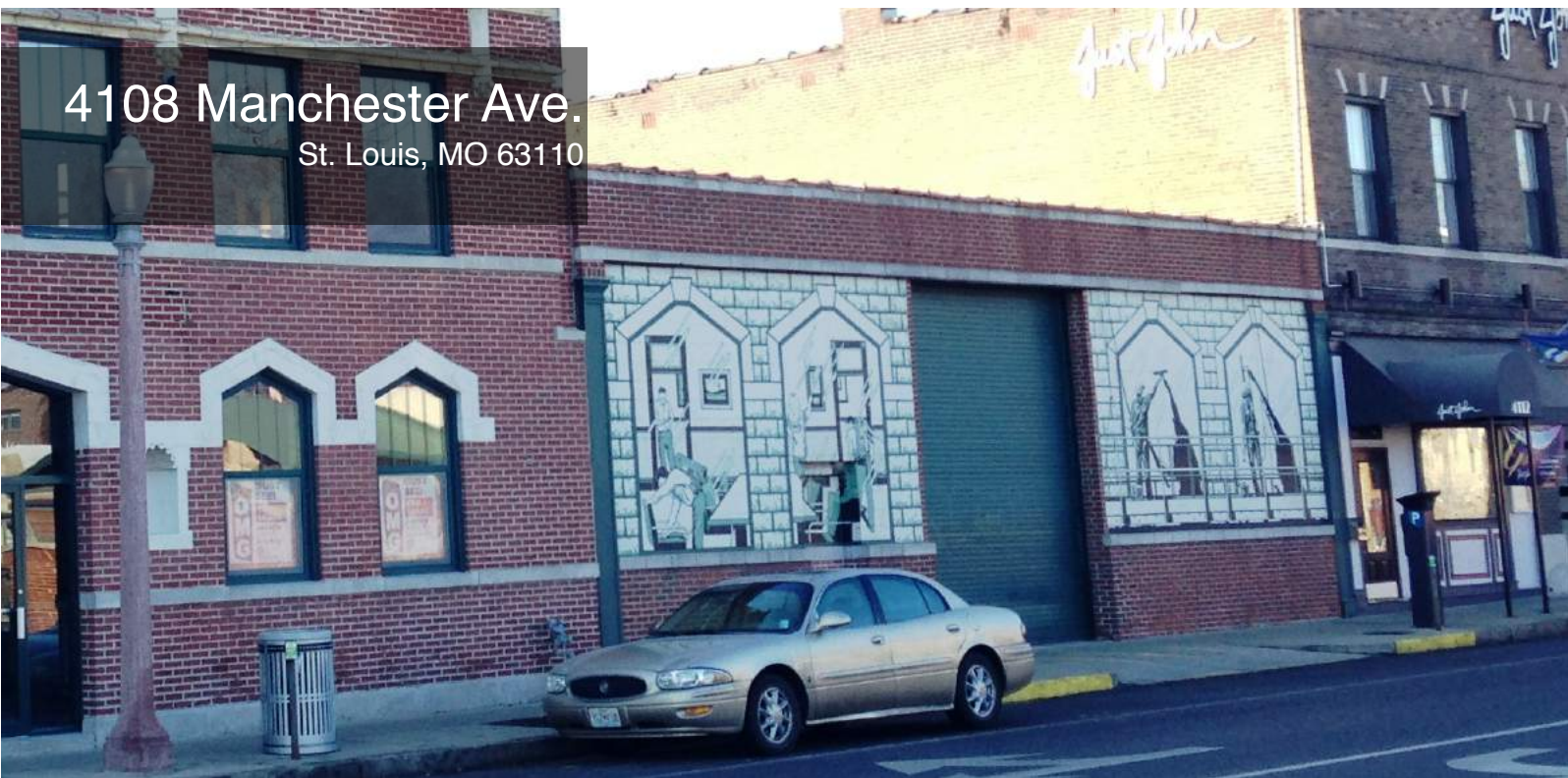


4108 Manchester Ave.  
St. Louis, MO 63110



## FOR LEASE

### \$8.00/SF NN

- Redevelopment Opportunity
- 7,200 SF Office | Retail
- 15' Ceilings and Wide Open Spaces
- 14' Drive-In Door
- Public Parking Across the Street



**TOWER**  
REAL ESTATE GROUP



**Jassen Johnson**  
jassen@risetothelocation.com  
314.614.6181

**Mike Cromie**  
mike@risetothelocation.com  
314.571.7664

**RISETOTHELOCATION.com**

1425 S. 18th Street | St. Louis | MO 63104 | 314.771.5335

# THE GROVE



## TOWER

REAL ESTATE GROUP

RISE TO THE LOCATION.com

1425 S. 18th Street | St. Louis | MO 63104 | 314.771.5335