

1917-35 Delmar Blvd.  
St. Louis, MO 63103



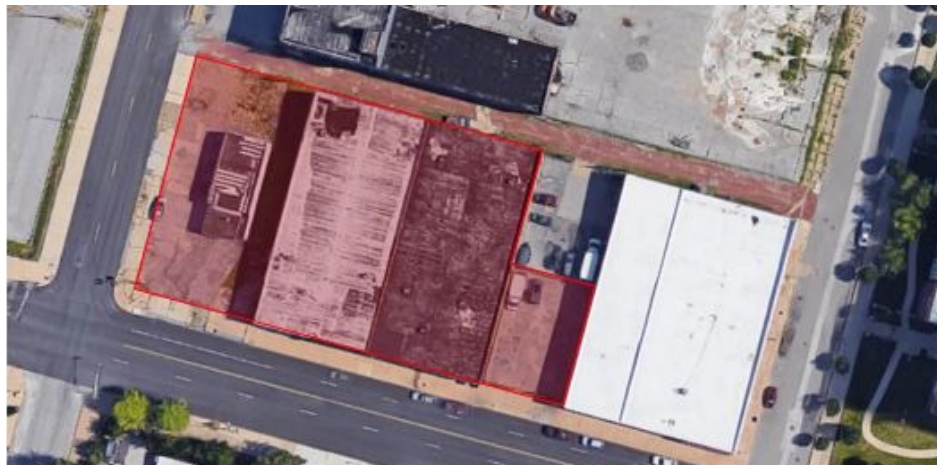
## FOR SALE

\$695,000

- 20,020 SF with 5% Office
- Can Divide into 4 separate 5,000 SF Bays
- Less Than 1 Mile From Future NGA Site
- 100% Temperature Controlled Warehouse
- Fenced Parking Lot



**TOWER**  
REAL ESTATE GROUP



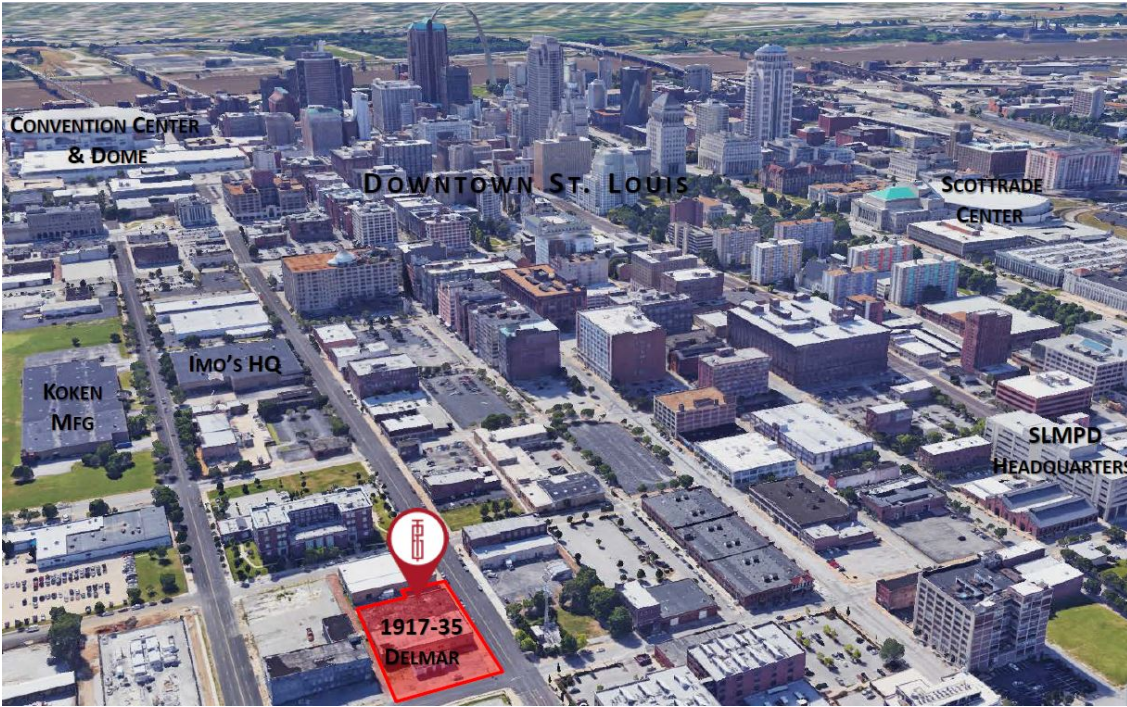
**Mike Cromie**  
mike@risetothelocation.com  
314.571.7664

**Jacqueline Davis-Wellington**  
jacque@risetothelocation.com  
314.960.4921

**RISEOTHELOCATION.com**

1425 S. 18th Street | St. Louis | MO 63104 | 314.771.5335





- Floor Drains
- Tanks Removed On Former Service Station Lot, Included in Sale
- 3 Phase Electric
- Four Dock Doors in Alley
- 15' Clear Ceiling Height
- Built in 1962

