

2940 Locust St
St. Louis, MO 63103



FOR SALE: \$325,000

FOR LEASE: \$2,500/MO

- Approx. 2,888 SF
- Whiteboxed
- New Storefronts
- In the heart of Midtown Alley I St. Louis Design District



TOWER
REAL ESTATE GROUP

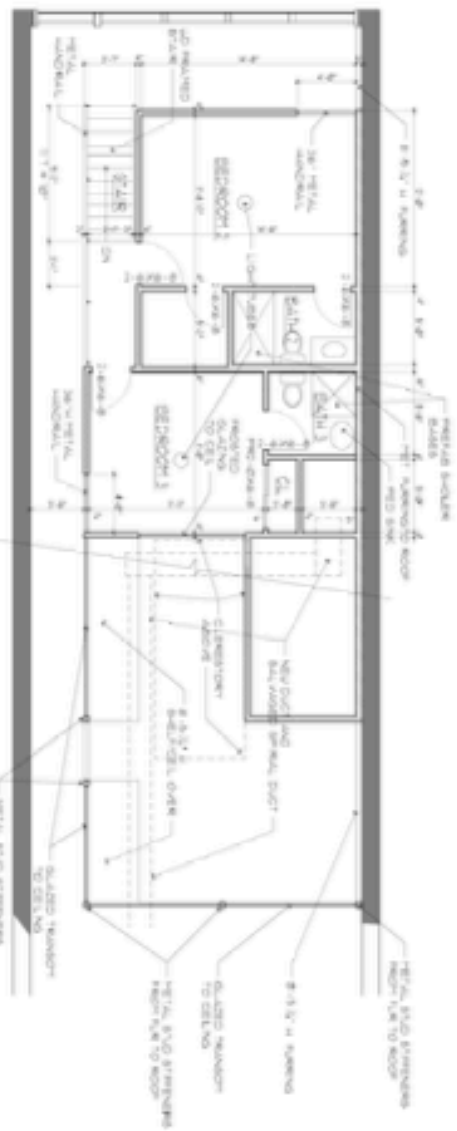


Jassen Johnson
jassen@risetothelocation.com
314.614.6181

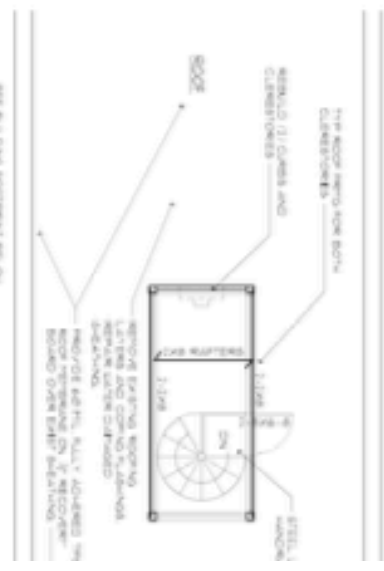
Jacqueline Davis-Wellington
jacque@risetothelocation.com
314.960.4921

RISEOTHELOCATION.com

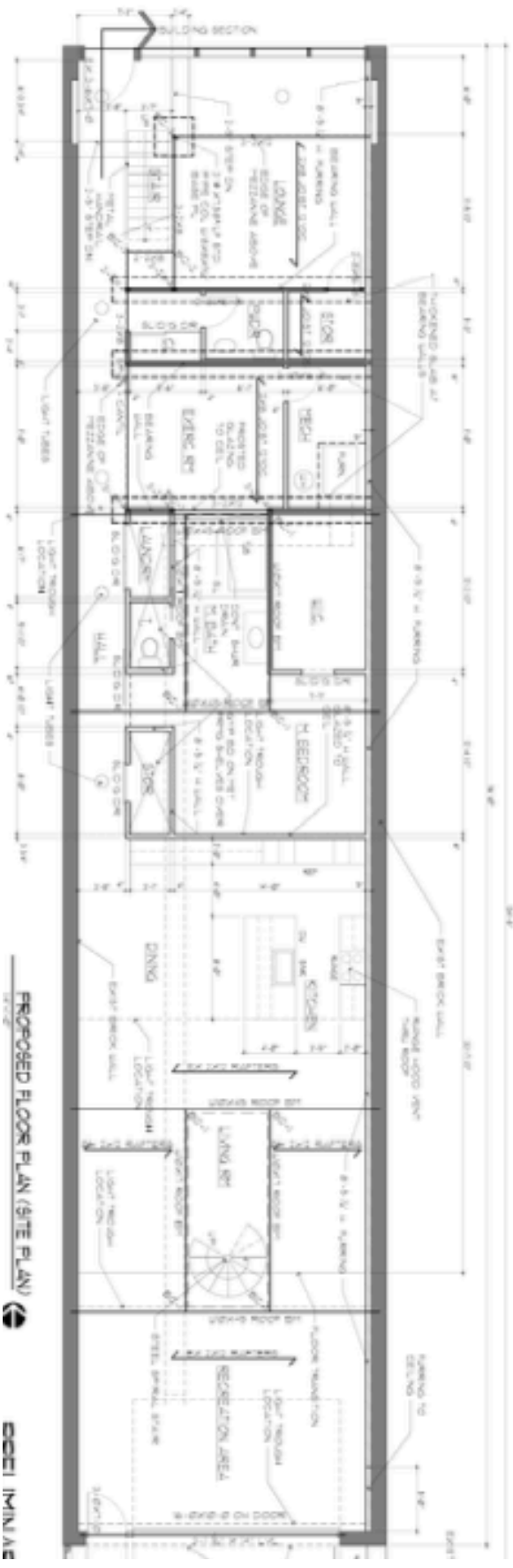
1425 S. 18th Street | St. Louis | MO 63104 | 314.771.5335



PROPOSED MEZZANINE PLAN



PARTIAL SCOPE PLAN



PROPOSED FLOOR PLAN (SITE PLAN)



ES&E IMIN/AS