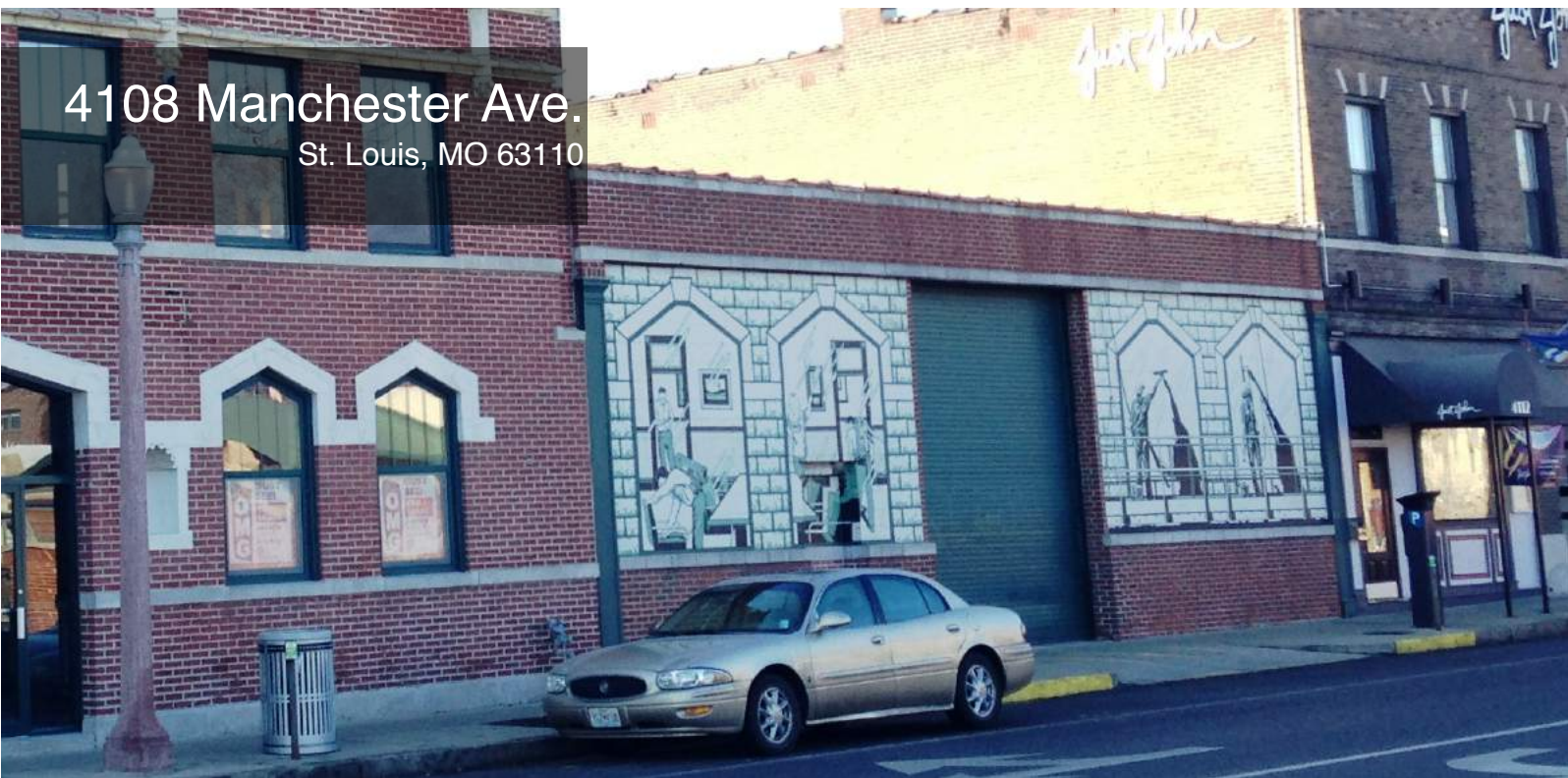


4108 Manchester Ave.
St. Louis, MO 63110



FOR LEASE

\$8.00/SF NN

- Redevelopment Opportunity
- 7,200 SF Office | Retail
- 15' Ceilings and Wide Open Spaces
- 14' Drive-In Door
- Public Parking Across the Street



TOWER
REAL ESTATE GROUP



Jassen Johnson
jassen@risetothelocation.com
314.614.6181

Mike Cromie
mike@risetothelocation.com
314.571.7664

RISETOTHELOCATION.com

2315 Locust Street | Suite 2 | St. Louis | MO 63103 | 314.329.0839

THE GROVE



TOWER REAL ESTATE GROUP

RISETOTHELOCATION.com

2315 Locust Street | Suite 2 | St. Louis | MO 63103 | 314.329.0839