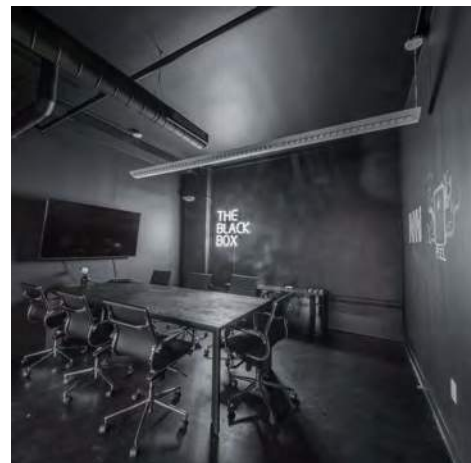
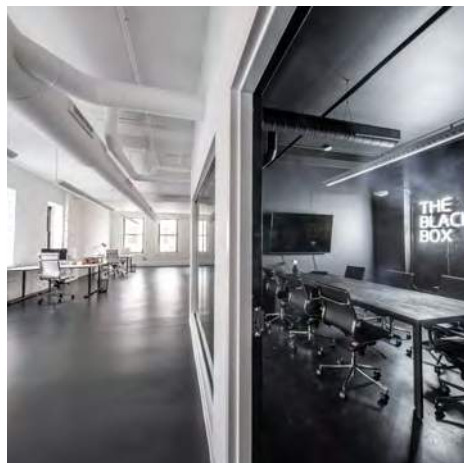
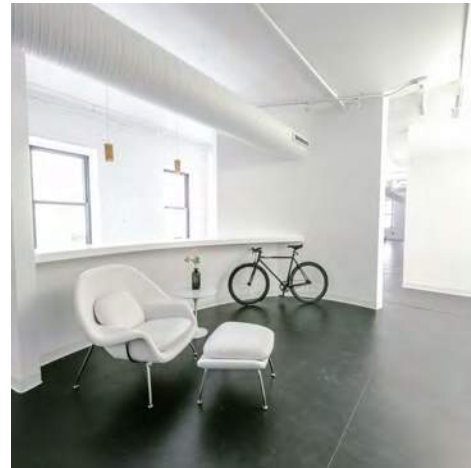


1006 Olive St. Unit 303
St. Louis, MO 63101

LUDWIG

FOR LEASE \$2,920/MO FS

- In the heart of Downtown
- Approx. 2,696 SF
- Open Plan with Private Offices
- Conference Room
- Newly Updated



TOWER
REAL ESTATE GROUP



Jassen Johnson

jassen@risetothelocation.com
314.614.6181

Mike Cromie

mike@risetothelocation.com
314.571.7664

RISEOTHELOCATION.com

2315 Locust Street, Suite 2 | St. Louis | MO 63103 | 314.771.5335



TOWER

REAL ESTATE GROUP

RISE TO THE LOCATION.com

2315 Locust Street, Suite 2 | St. Louis | MO 63103 | 314.771.5335