

3010 Locust St.  
Suite 100 C  
St. Louis, MO 63103

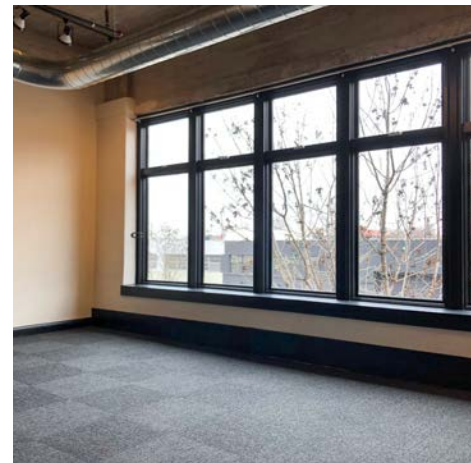


## FOR LEASE \$2,500/MO MG

- Approx. 1,800 RSF 2nd Floor
- Creative Office Space
- In the Heart of Midtown Alley
- 4 Offices
- Large Conference Room
- Kitchenette
- Shared Lobby Entrance
- Elevator Served



**TOWER**  
REAL ESTATE GROUP



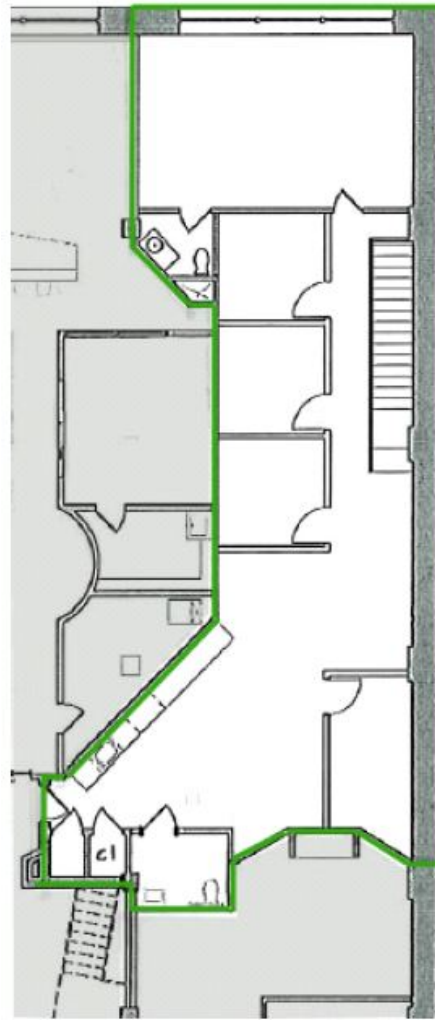
**Lisa Mandel**  
lisa@risetothelocation.com  
314.477.1142

**Mike Cromie**  
mike@risetothelocation.com  
314.571.7664

**RISEOTHELOCATION.com**

2315 Locust Street | Suite 2 | St. Louis | MO 63103 | 314.771.5335

# Floor Plan | Location



**OUR NEIGHBORS TO THE SOUTH AND WEST**

- GRAND CENTER ARTS DISTRICT
  - CRAFT ALLIANCE - KDHX - THE FABULOUS
  - FOX THEATRE - POWELL SYMPHONY HALL
- CORTEX
  - SAINT LOUIS UNIVERSITY
  - HARRIS STOWE UNIVERSITY
  - B.J.C HOSPITAL CAMPUS
  - IKEA AND OTHER SHOPPING

**OUR NEIGHBORS TO THE NORTH AND EAST**

- DOWNTOWN ST. LOUIS
  - BUSCH STADIUM & BALLPARK VILLAGE
  - SAAVIS CENTER
  - PEABODY OPERA HOUSE