

4188 Manchester
St. Louis, MO 63110



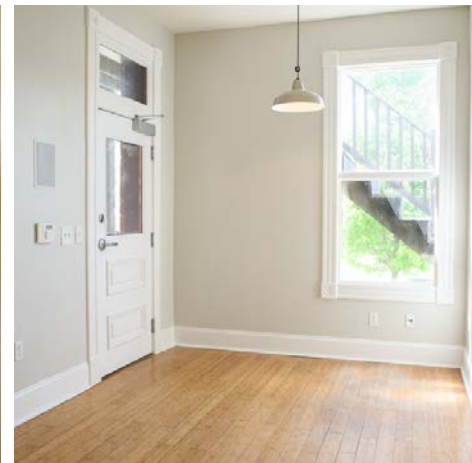
FOR LEASE

\$1,600/MO NNN

- 1,112 SF Retail in the Grove
- Former Hair Salon Space
- Front Reception | Retail Space
- Plumbing for Shampoo Bowls
- Storage Closet with Sink & Laundry Hook-Up
- Back Office | Basement Storage
- ADA Accessible with Chair Lift
- A couple Off-Street Parking Spaces



TOWER
REAL ESTATE GROUP



Lisa Mandel
lisa@risetothelocation.com
314.477.1142

Mike Cromie
mike@risetothelocation.com
314.428.9738

RISEOTHELOCATION.com

2315 Locust Street | Suite 2 | St. Louis | MO 63103 | 314.329.0839

Location



- 60 + Existing Businesses, 369,000 SF of Entertainment and Retail Spaces with great walkability
- Surrounded by educational institutions including SLU, Barnes - Jewish College of Nursing and St. Louis College of Pharmacy
- The Grove has a vast scene of culture from bars, ethnic restaurants, dance clubs to a favorite local coffee shop. It is continuously growing with surrounding development currently happening.

