

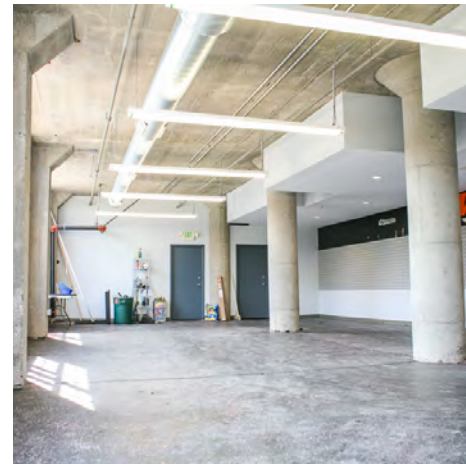
3427 Locust Street
St. Louis, MO 63103



FOR LEASE

\$14.00/SF MG

- Approx. 3,405 SF
- Loft Style Creative Office | Retail Space
- Exposed Brick and Great Window Lines
- ADA Accessible
- Located in St. Louis' Design District
- Adjacent to St. Louis University



TOWER
REAL ESTATE GROUP



Lisa Mandel
lisa@risetothelocation.com
314.477.1142

Mike Cromie
mike@risetothelocation.com
314.571.7664

RISEOTHELOCATION.com

2315 Locust Street | Suite 2 | St. Louis | MO 63103 | 314.771.5335