

3118 Locust St.
St. Louis, MO 63103

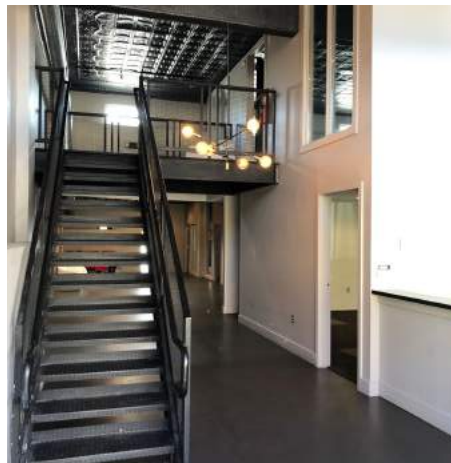


FOR LEASE \$4,500/MO MG

- Heart of St. Louis Design District
- New Updated Finishes
- Creative Office
- Exposed Brick
- Open Workspace & Private Offices
- 3,544 SF



TOWER
REAL ESTATE GROUP

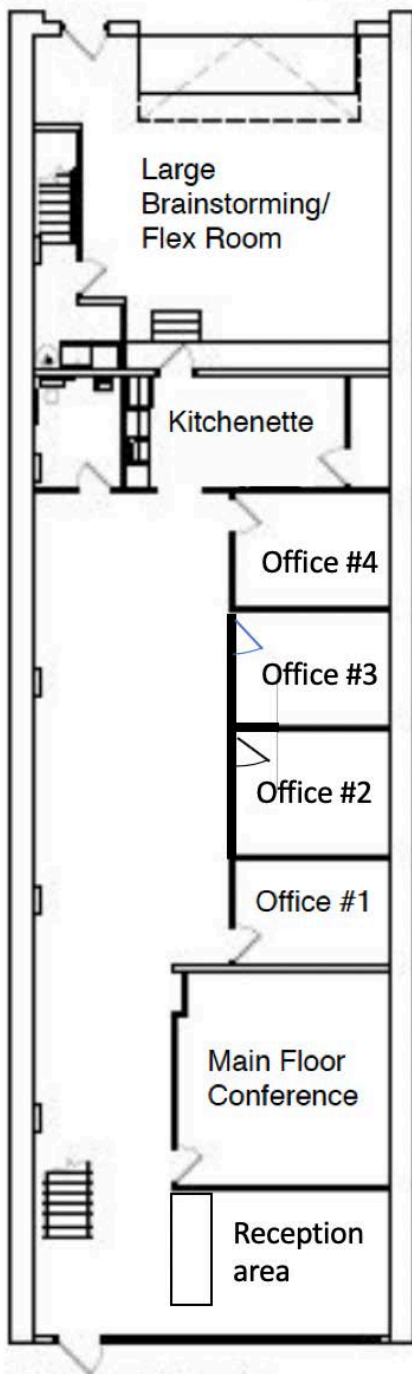


Jassen Johnson
jassen@risetothelocation.com
314.614.6181

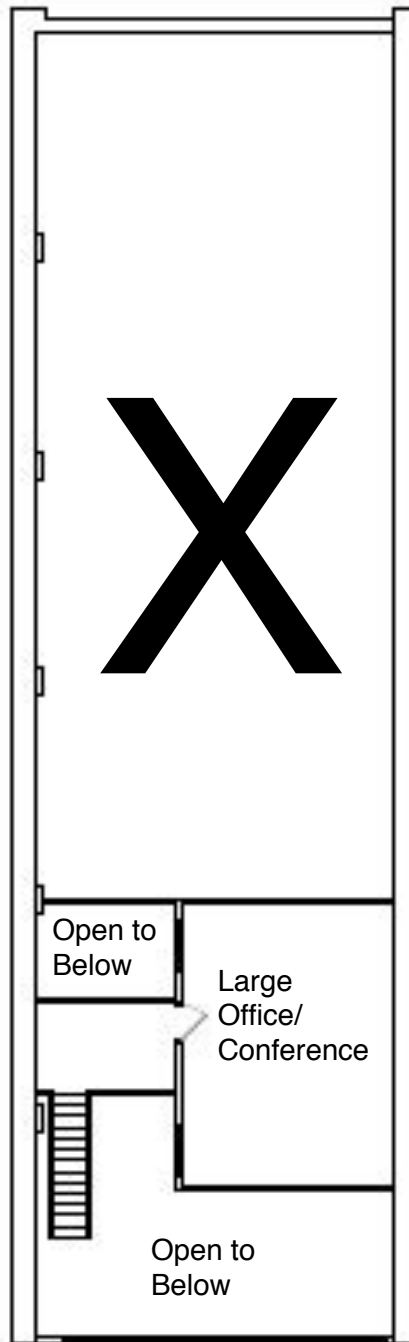
Lisa Mandel
lisa@risetothelocation.com
314.477.1142

RISETOHELLOCATION.com

2315 Locust Street Suite 2 | St. Louis, MO 63103 | 314.329.0839



1st Floor



2nd Floor