

3005 Locust St.
St. Louis, MO 63103



TOWER
REAL ESTATE GROUP

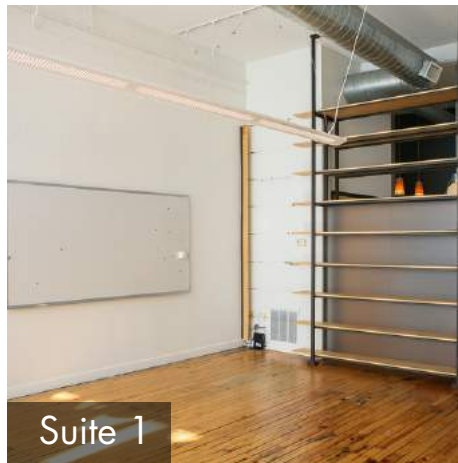
FOR LEASE

Suite 1: \$1,027.00/MO

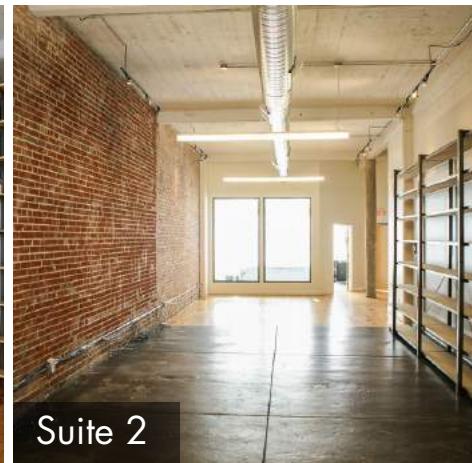
Suite 2: \$2,125.00/MO

Combined : \$3,187.50/MO

- Up to 2,250 SF Available in Adjacent Suites
- Suite 1: 725 SF
- Suite 2: 1,500 SF
- Creative Office Space in Midtown



Suite 1



Suite 2



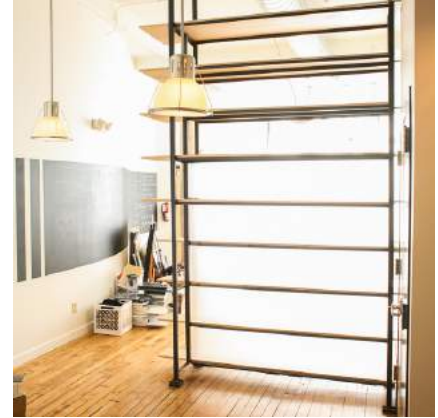
Jassen Johnson
jassen@risetothelocation.com
314.614.6181

Mike Cromie
mike@risetothelocation.com
314.428.9738

RISETOTHELOCATION.com

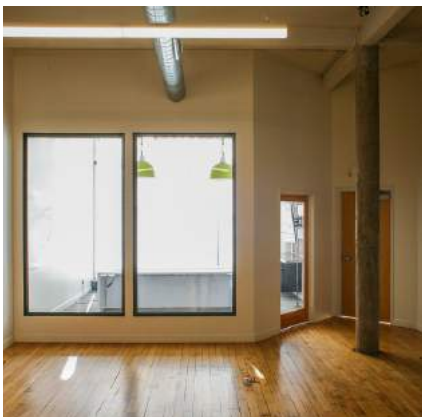
2315 Locust Street Suite 2 | St. Louis | MO 63103 | 314.329.0839

Suite Information



Suite 1:

- 725 SF
- Tall Ceilings and Exposed Brick
- Storefront Exposure
- Open Floor Plan
- Kitchenette



Suite 2:

- 1,500 SF
- Open Floor Plan
- Storefront Exposure
- Conference Room
- Kitchenette
- 3 Gated Parking Spaces

Location

EXPLORING



& Jefferson Connector

