

2811-15 Locust St.  
St. Louis, MO 63103

## Available For Sale or Lease: 3,277 - 8,577 SF Creative Office

2811 Locust:

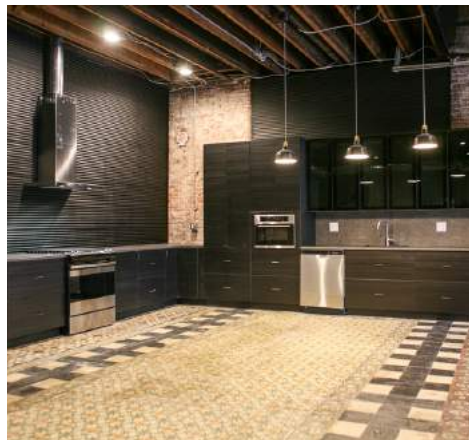
- 3,277 SF | Fully Leased
- \$475,000

2815 Locust:

- 5,300 SF | Available
- Recently Renovated with All new Systems
- Located in St. Louis' Premier Design District
- 3 Parking Spaces Included with Additional Available
- \$875,000 or \$7,066/MO MG



**TOWER**  
REAL ESTATE GROUP



**Jassen Johnson**  
jassen@risetothelocation.com  
314.614.6181

**Mike Cromie**  
mike@risetothelocation.com  
314.428.9738

**RISEOTHELOCATION.com**

2315 Locust Street Suite 2 | St. Louis | MO 63103 | 314.329.0839

# Floor Plans

