

2815 Locust St.
St. Louis, MO 63103

FOR LEASE

\$7,066/MO MG

- 5,300 SF
- Creative Office Space
- Can Be Combined with 2811 Locust for Total of 8,577 SF
- Recently Renovated with All New Systems
- Located in St. Louis' Premier Design District



TOWER
REAL ESTATE GROUP



Jassen Johnson
jassen@risetothelocation.com
314.614.6181

Mike Cromie
mike@risetothelocation.com
314.428.9738

RISEOTHELOCATION.com

2315 Locust Street Suite 2 | St. Louis | MO 63103 | 314.329.0839

**HOME TO MORE
THAN 30 DESIGN,
ARCHITECTURE
& PHOTO STUDIOS**



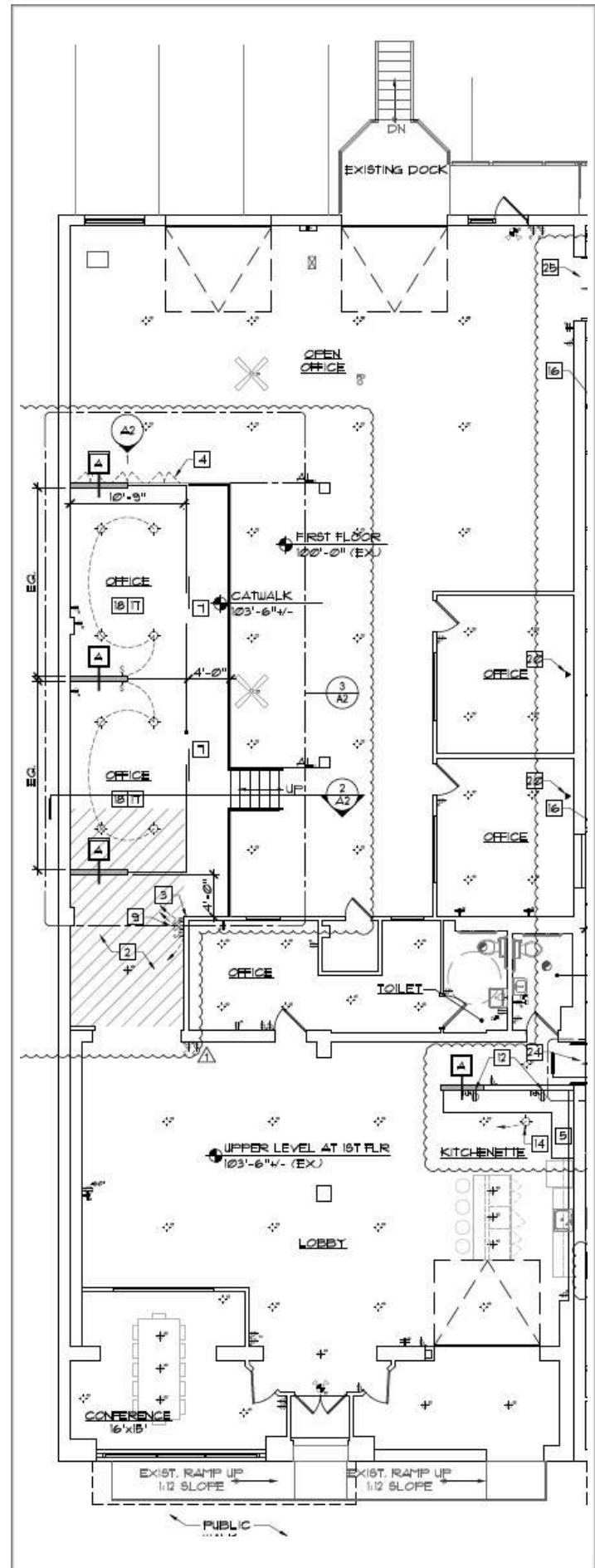
MIDTOWNALLEY.COM



- 5 Large Offices, Could be Used for Multiple People
- Conference Rooms
- Full Kitchen
- 3 Parking Spaces Included
- Options for Additional Parking
- Exterior Deck



TOWER
REAL ESTATE GROUP



RISETOTHELOCATION.com

2315 Locust Street Suite 2 | St. Louis | MO 63103 | 314.329.0839