



TOWER

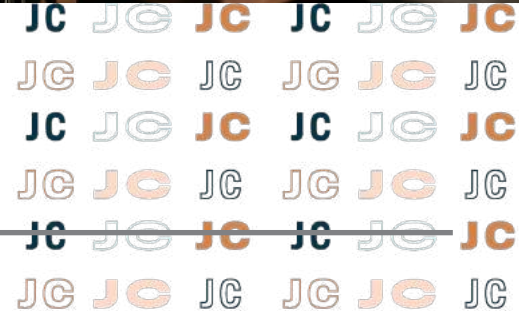
REAL ESTATE GROUP

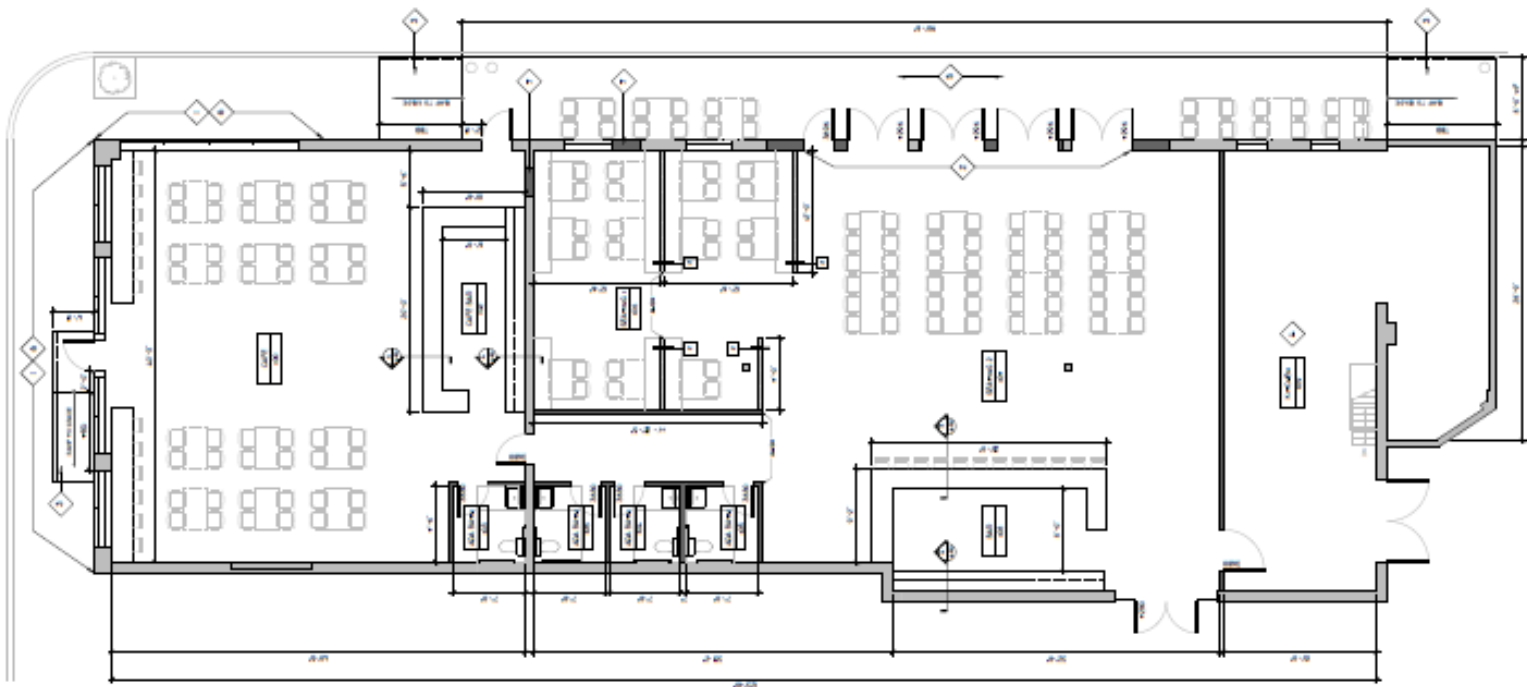


2700 Locust Street St Louis MO 63103



JC MIDTOWN





5,500 SF | \$9,988/MO + Utilities

- Seeking A Combination of Food & Beverage Concepts
- Adjacent to a Activity Bar, AirBNB and Wine/Beer Garden Concept
- Part of the Midtown Sporting Club Development in JCMidtown
- This Cool New Space with be Turn-Key - Tenant Only Supplying the FF&E
- Corner Location Adjacent to the Entrance of Wells Fargo Advisors
- Expansive Outdoor Seating

experiencejcmidtown.com

Jassen Johnson
 jassen@risetothe location.com
 314.614.6181



Mike Cromie
 mike@risetothe location.com
 314.428.9738

