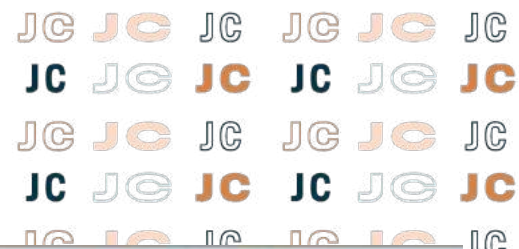




# TOWER

REAL ESTATE GROUP



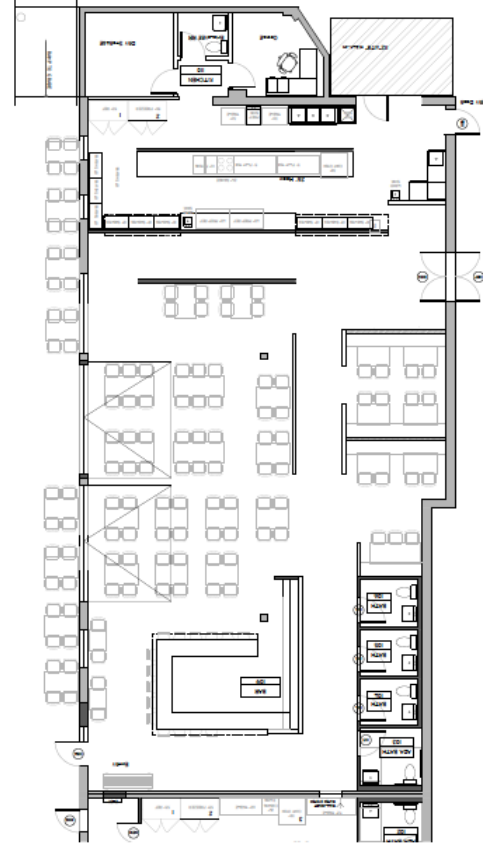
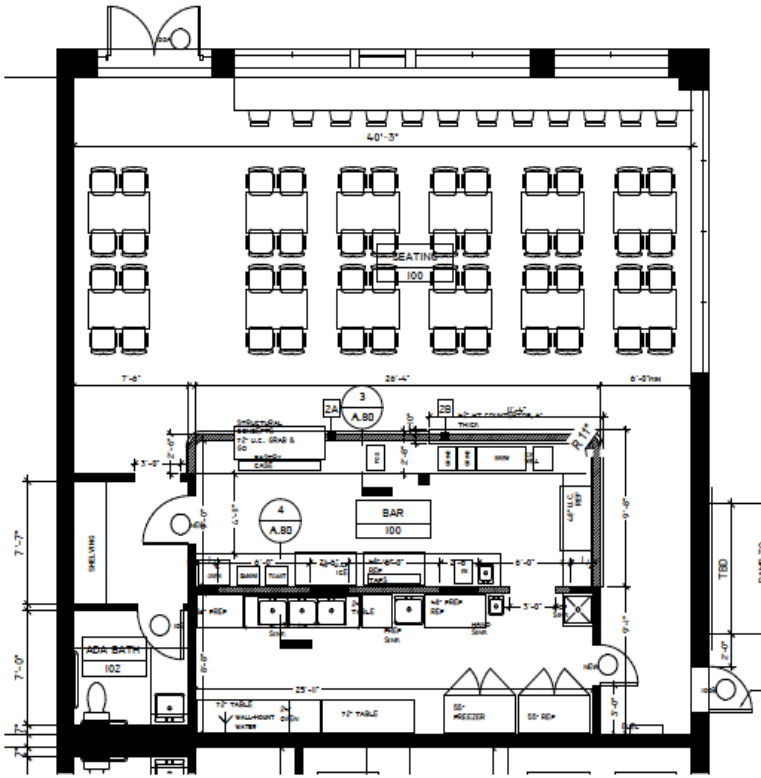
ARCH  
Antony  
Duncan  
Architect

2700-2702 Locust Street  
St. Louis, MO 63103



# JC MIDTOWN

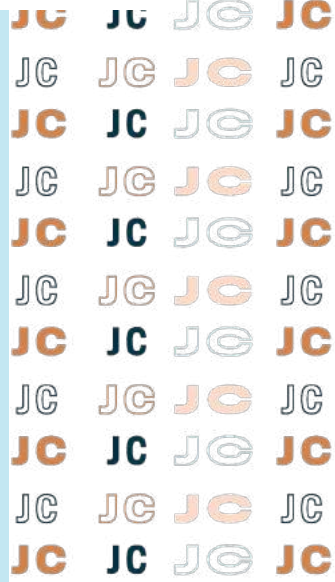




**2700 Locust: Approx. 1,627 SF: \$2,949/MO+Utilities**  
**2702 Locust: Approx. 3,873 SF: \$7,033/MO+Utilities**

- Seeking a Combination of Food & Beverage Concepts
  - Can Be Combined for 5,500 SF
  - Adjacent to Nexus Cultural Cousine and Cocktails and 2710 Locust
  - Corner Location Adjacent to the Entrance of Wells Fargo Advisors
  - Next to Malone Apartments, Eliot's Apartments, Creative Agencies, Businesses and part of a \$70M development
  - Blocks from MLS Stadium and the National Geospatial Agency
- This Cool New Space will be Turn-Key - Tenant Only Supplying FF&E
- Can Lease with 2702 Seasonal Outdoor Space

[experiencejcmidtown.com](http://experiencejcmidtown.com)



Jassen Johnson  
[jassen@risetothelocation.com](mailto:jassen@risetothelocation.com)  
314.614.6181



Mike Cromie  
[mike@risetothelocation.com](mailto:mike@risetothelocation.com)  
314.428.9738

