



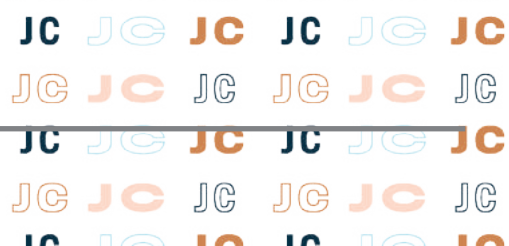
# TOWER

REAL ESTATE GROUP

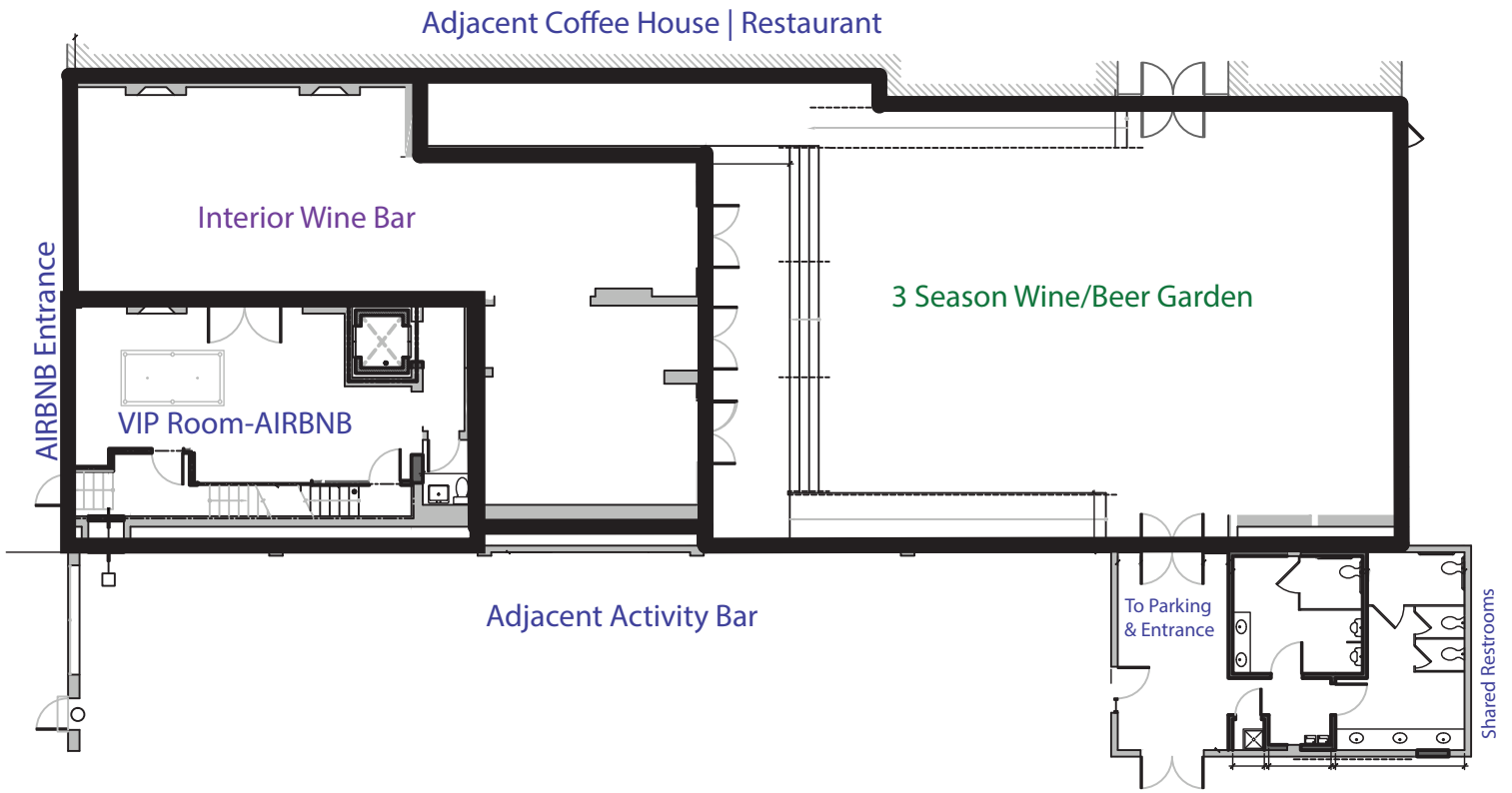
2704 Locust Street, St. Louis, MO 63103



# JCMIDTOWN



overview

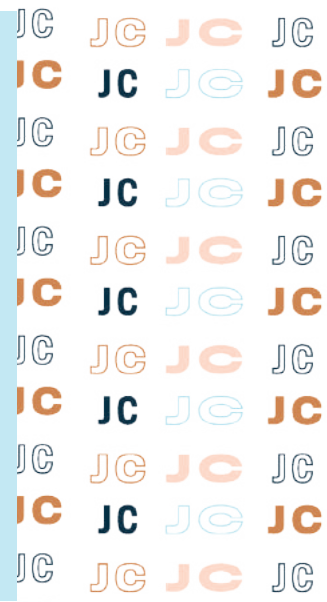


# 4,670 SF | \$6,600/MO + Utilities

Located in the JC Midtown development that connects Midtown Alley Creative District and Downtown West.

- New Turn-Key Space - Tenant Only Supply FF&E
- Large 3-Season Wine/Beer Garden with Translucent Roof
- Under Construction with Opportunity to Customize
- Can Operate Multiple Concepts with 2 Adjacent Venues
- Ample Onsite Parking
- Steps from Front Door of Wells Fargo Advisors
- Few Blocks from New MLS Stadium

[experiencejcmidtown.com](http://experiencejcmidtown.com)



Jassen Johnson  
 jassen@risetothelocation.com  
 314.614.6181



Mike Cromie  
 mike@risetothelocation.com  
 314.428.9738

