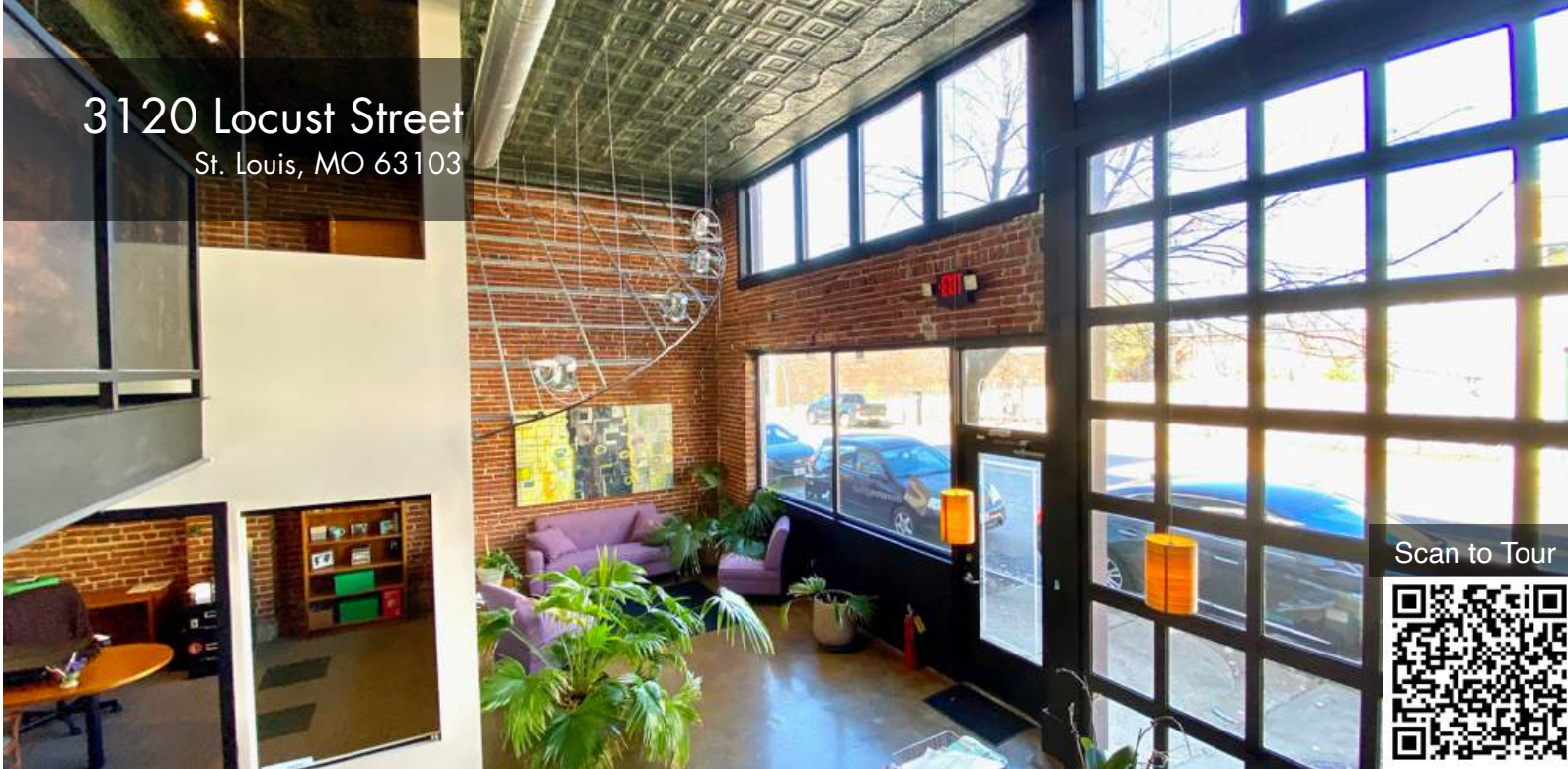


3120 Locust Street  
St. Louis, MO 63103



Scan to Tour



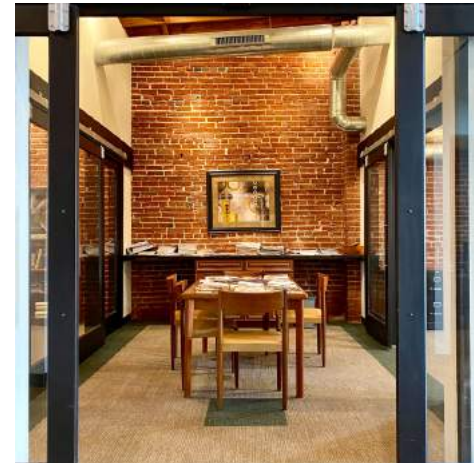
FOR LEASE

\$5,350/MO Modified Gross



TOWER  
REAL ESTATE GROUP

- Approximately 3,777 SF Midtown Creative Office
- Heart of STL's Design District
- Multiple Offices, Breakout & Conference Rooms
- Reception, Production Area & Kitchen
- Closets, Garage Storage & Custom Built-Ins
- Natural Light Thru Skylights & Glass Paneled Offices
- Walkable to Egg, Brennan's Work & Leisure, Pappy's, Fountain on Locust



**Mike Cromie**  
mike@risetothelocation.com  
314.428.9738

**Nick Cook**  
nick@risetothelocation.com  
314.606.8124

RISEOTHELOCATION.com

2315 Locust Street Suite 2 | St. Louis | MO 63103 | 314.329.0839

# Floor Plans

