

1006 Olive Street

Unit 202

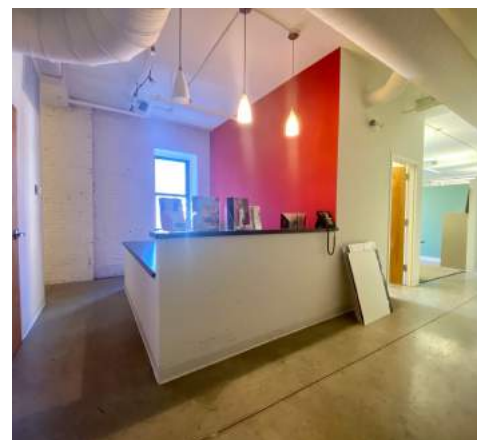
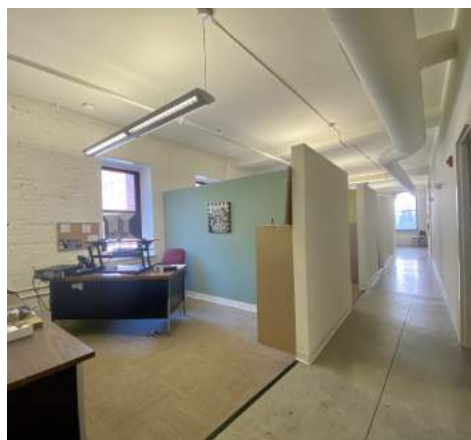
St. Louis, MO 63101



FOR LEASE

\$3,000/MO + Electric

- Approx. 2,696 SF
- Full floor, loft style creative office
- In the heart of Downtown
- Secure building access and elevator served
- Reception, production area, conference rm, storage
- Mix of private offices and semi-private cubicles
- Walk to Restaurants, Culinaria, City Garden and Ball Games



TOWER

REAL ESTATE GROUP



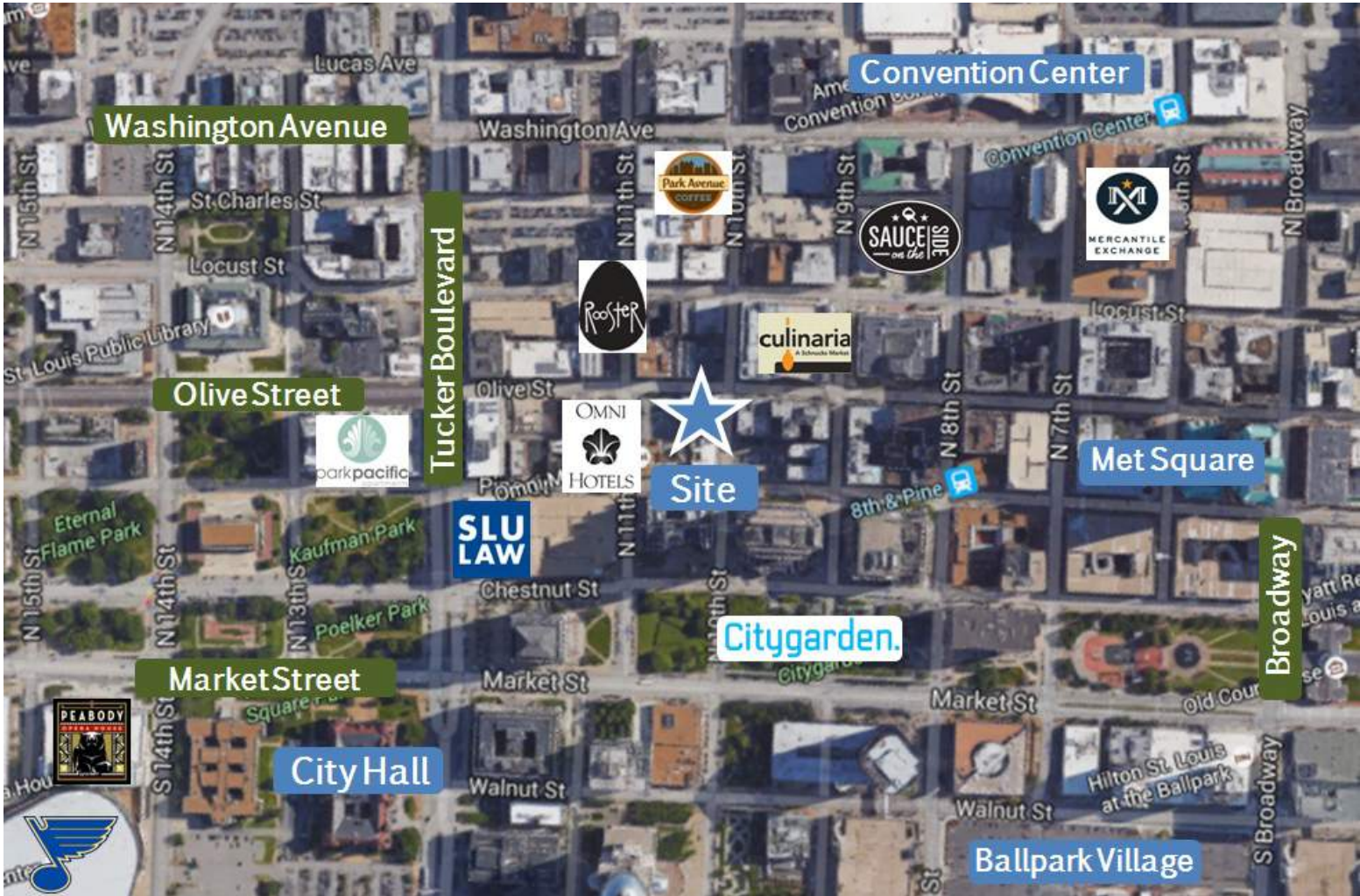
Mike Cromie

mike@risetothelocation.com

314.428.9738

RISEOTHELOCATION.com

2315 Locust Street Suite 2 | St. Louis | MO 63103 | 314.329.0839



TOWER

REAL ESTATE GROUP

RISETOTHELOCATION.com

2315 Locust Street Suite 2 | St. Louis | MO 63103 | 314.329.0839