

2647 Locust St.
#2S
St. Louis, MO 63103

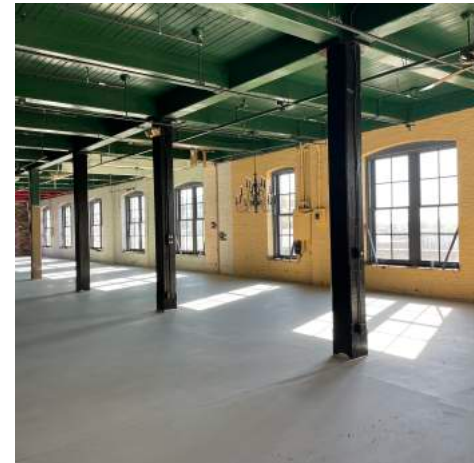
FOR LEASE :

2S : \$3,810/MO NNN

- 2S : Approx. 2,680 SF
- Tall Timber Ceilings | Large Windows | Wood Floors
- Elevator Entrance
- To Be Delivered White-Box or Can Be Delivered Turn-Key
- Located Among \$70M JCMidtown Development
- 2S Pricing Included in Proposed Layout
- ExperienceJCMidtown.com



TOWER
REAL ESTATE GROUP



Jassen Johnson
jassen@risetothelocation.com
314.614.6181

Mike Cromie
mike@risetothelocation.com
314.428.9738

RISETOHELATION.com

2315 Locust Street Suite 2 | St. Louis | MO 63103 | 314.329.0839

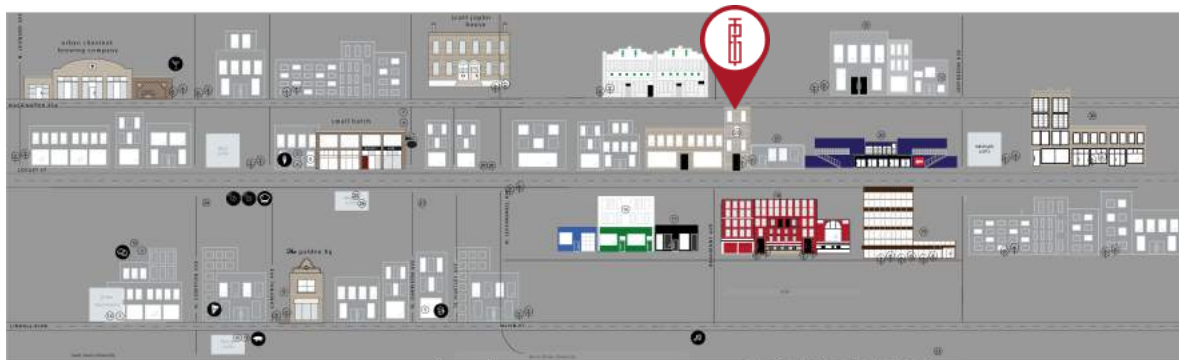
Floor Plans



Proposed 2nd Floor 2S Layout

Location

.EXPLORING. Midtown Alley & Jefferson Connector



- | | | |
|---|---|--|
| <p>shopping.</p> <ul style="list-style-type: none"> 1 The Golden Fig 2 The Luxe Loft 3 Music Record Shop <p>culture.</p> <ul style="list-style-type: none"> 4 Scott Joplin House 5 The Frothing 6 T-bar 7 F float STL 8 Salon 9 Midtown Barbershop | <p>food.</p> <ul style="list-style-type: none"> 10 Urban Chestnut Brewing Company 11 Small Batch 12 Poppy's Smokehouse 13 The Brennan House 14 Wellspend Brewing Company 15 The Fountain Dr. Locust 16 Tain 17 Puga's Pizzeria | <p>coming to the neighborhood.</p> <ul style="list-style-type: none"> 18 Brennan's Work & Leisure 19 Sapporo 2 20 Southern 21 Center Ice Brewery 22 The Corner 23 Sophie's Artists Lounge 24 Baby Kicks Bakery |
|---|---|--|