

5215 DELMAR BLVD

NEW CONSTRUCTION DEVELOPMENT @ DELMAR & UNION



DMD
DELMAR MAKER DISTRICT

STLMADE

PRE-LEASING NOW
CONTACT BROKER

Mike Cromie
314.428.9738
mike@risetothelocation.com



Jassen Johnson
314.614.6181
jassen@risetothelocation.com

PROPERTY HIGHLIGHTS

Restaurant | Retail | Office Suites Available

Situated in the Delmar Maker District

Visible High Traffic Location

Ample Parking on Site

Flanked by \$84M In Development Including Delmar Devine & The Bridge

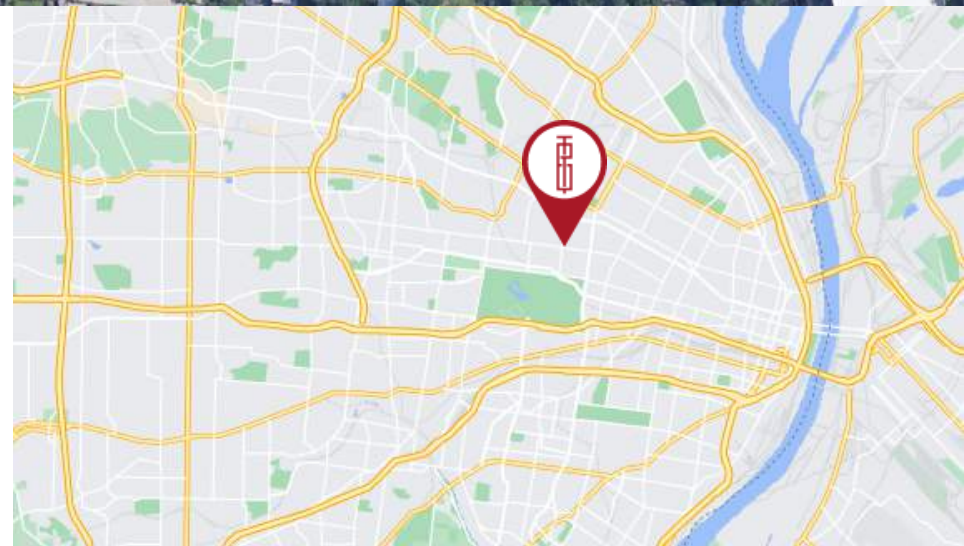


LOCATION

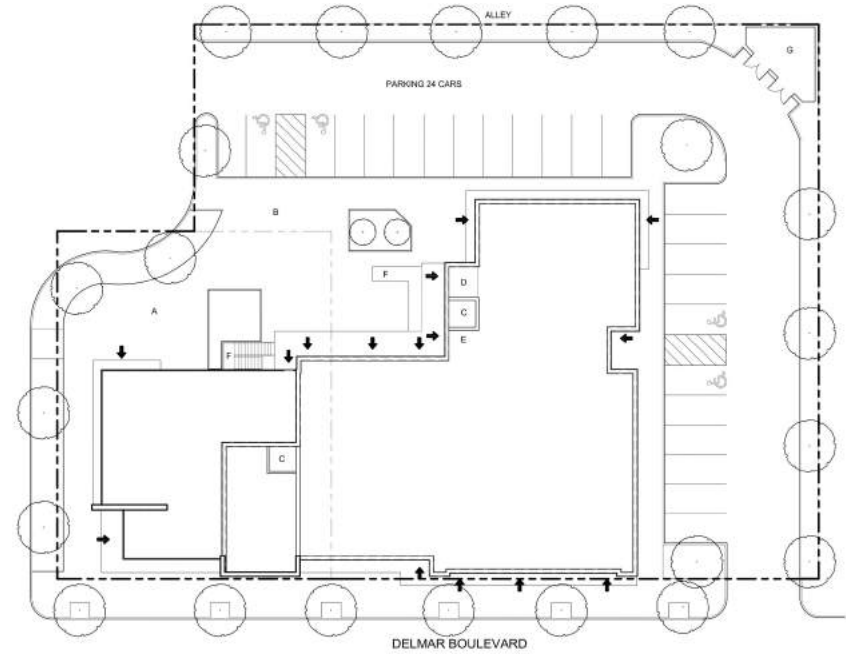


The Delmar Maker District creates a destination for both locals and tourists to create, shop, learn, and socialize.

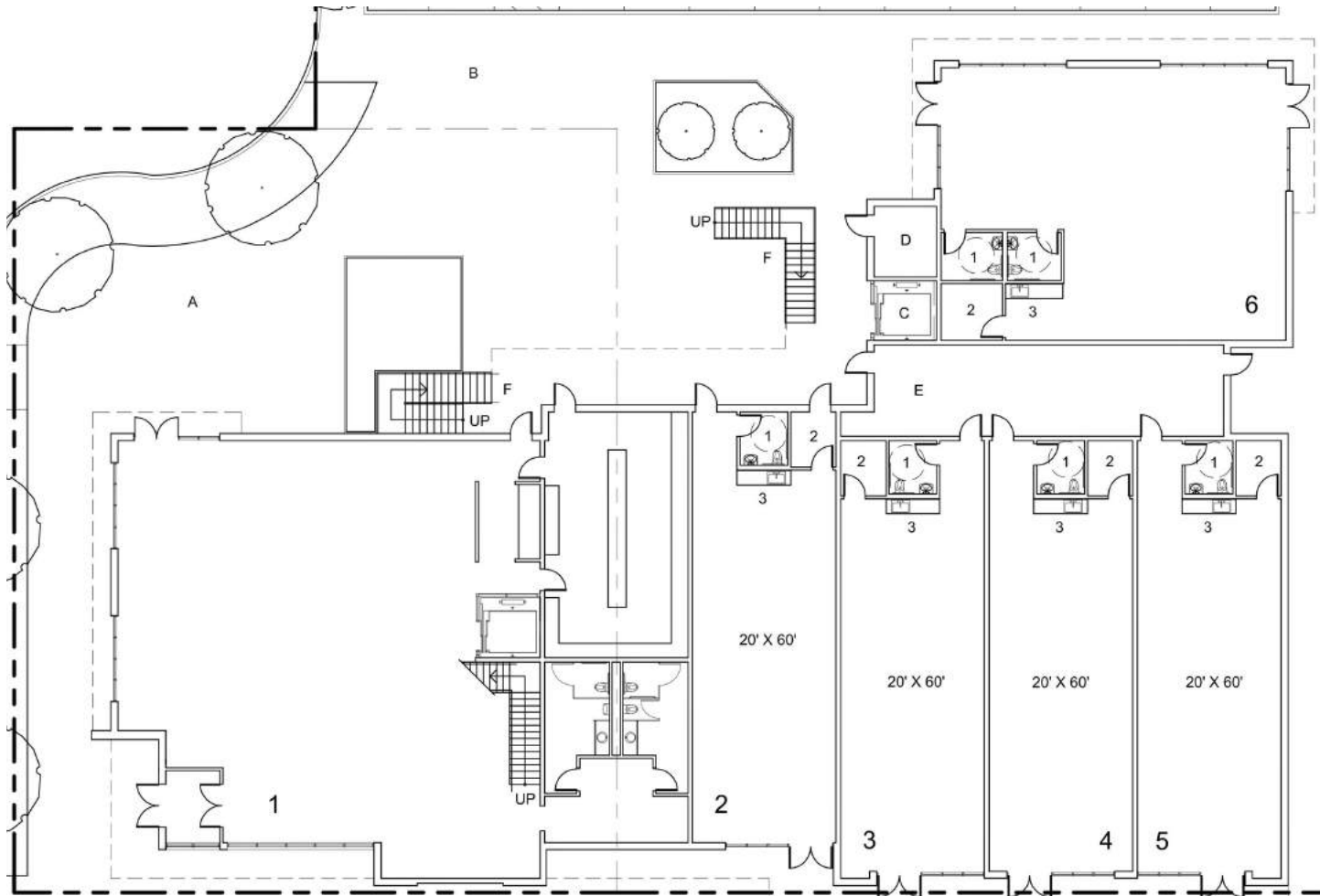
LIVE - MAKE - SELL
WWW.DELMARMAKERDISTRICT.ORG



SITE PLAN + DESIGN



FIRST FLOOR PLAN



RESTAURANT

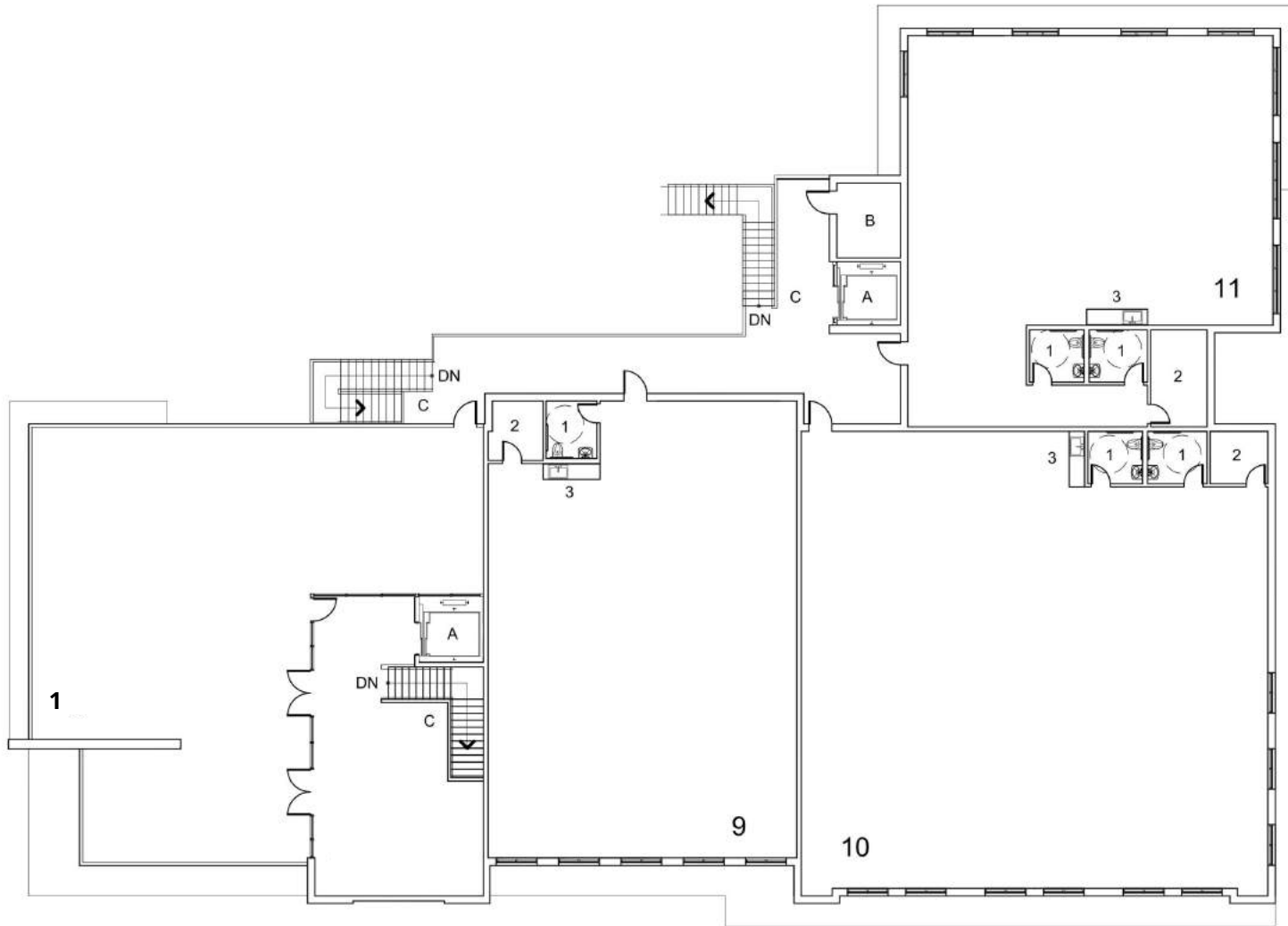
Suite 1 - 4,538 SF
w/ 2,405 SF Rooftop
Seating & Bar

RETAIL

Suite 2 - 1,200 SF
Suite 3 - 1,200 SF
Suite 4 - 1,200 SF
Suite 5 - 1,200 SF
Suite 6 - 1,827 SF



SECOND FLOOR PLAN



RESTAURANT

Suite 1 - 2,405 SF

Rooftop Seating & Bar

OFFICE

Suite 9 - 2,436 SF

Suite 10 - 3,686 SF

Suite 11 - 2,353 SF

