

# 5215 DELMAR BLVD

NEW CONSTRUCTION DEVELOPMENT @ DELMAR & UNION



**PRE-LEASING NOW**  
**CONTACT BROKER**

Mike Cromie  
314.428.9738  
mike@risetothelocation.com



Jassen Johnson  
314.614.6181  
jassen@risetothelocation.com

## PROPERTY HIGHLIGHTS

Restaurant | Retail | Office Suites Available

Situated in the Delmar Maker District

Visible High Traffic Location

Ample Parking on Site

Flanked by \$84M In Development Including Delmar Devine & The Bridge

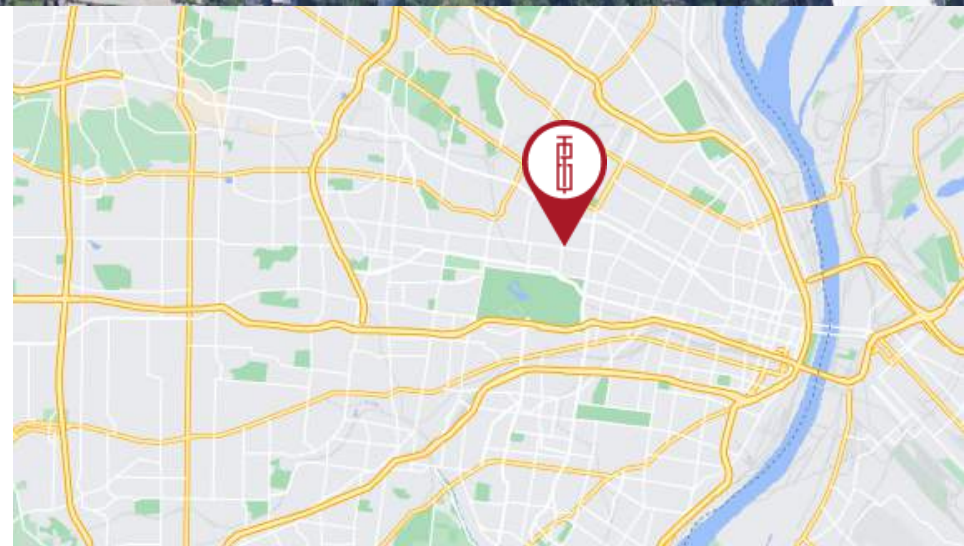


# LOCATION



The Delmar Maker District creates a destination for both locals and tourists to create, shop, learn, and socialize.

**LIVE - MAKE - SELL**  
[WWW.DELMARMAKERDISTRICT.ORG](http://WWW.DELMARMAKERDISTRICT.ORG)



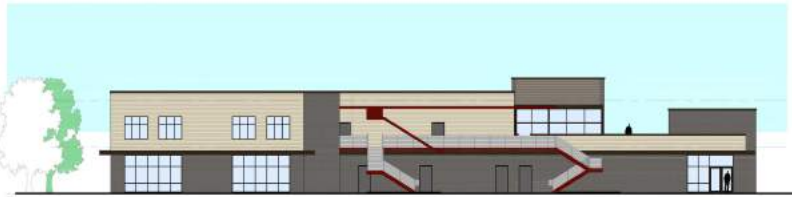
# SITE PLAN + DESIGN



SOUTH ELEVATION



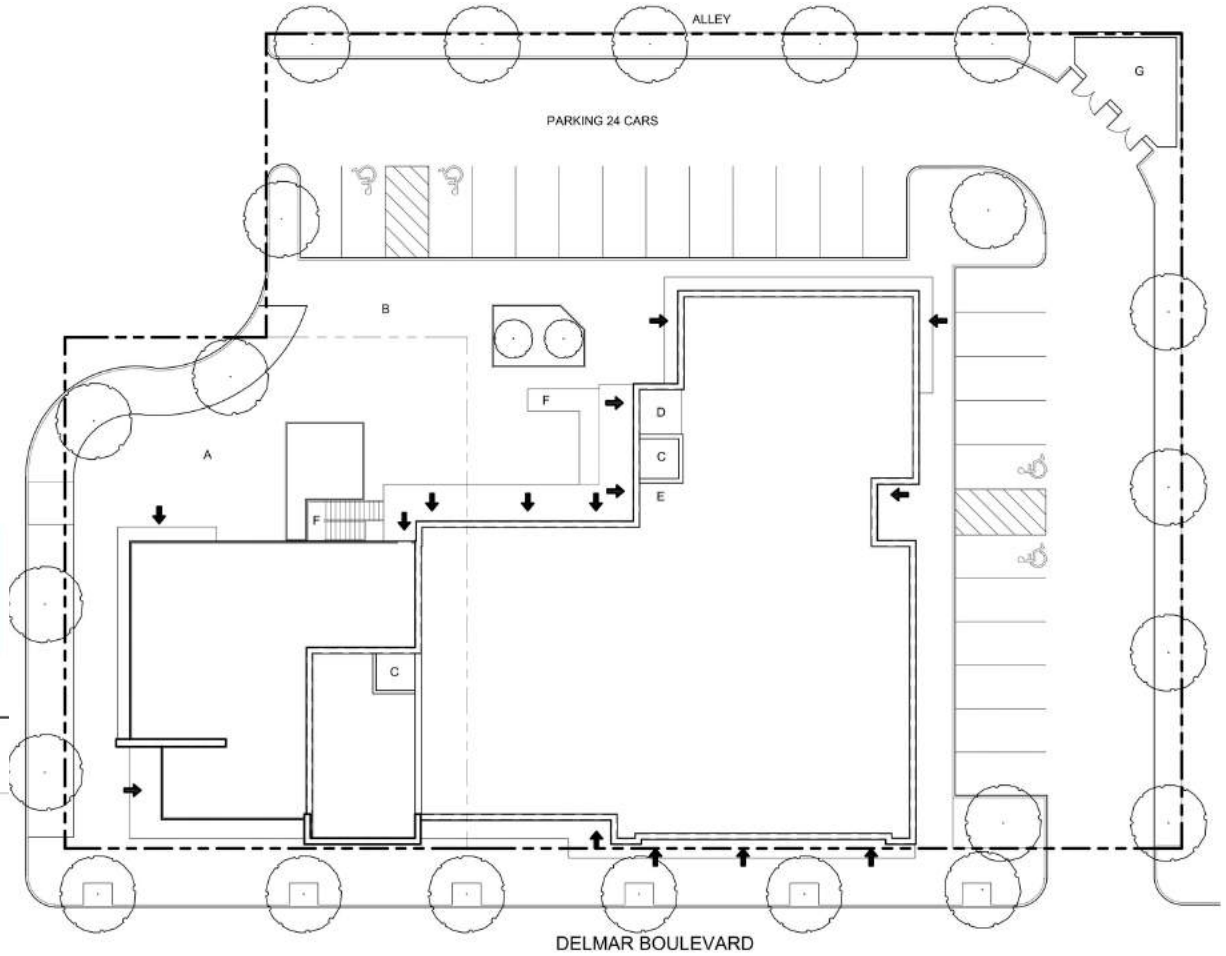
WEST ELEVATION



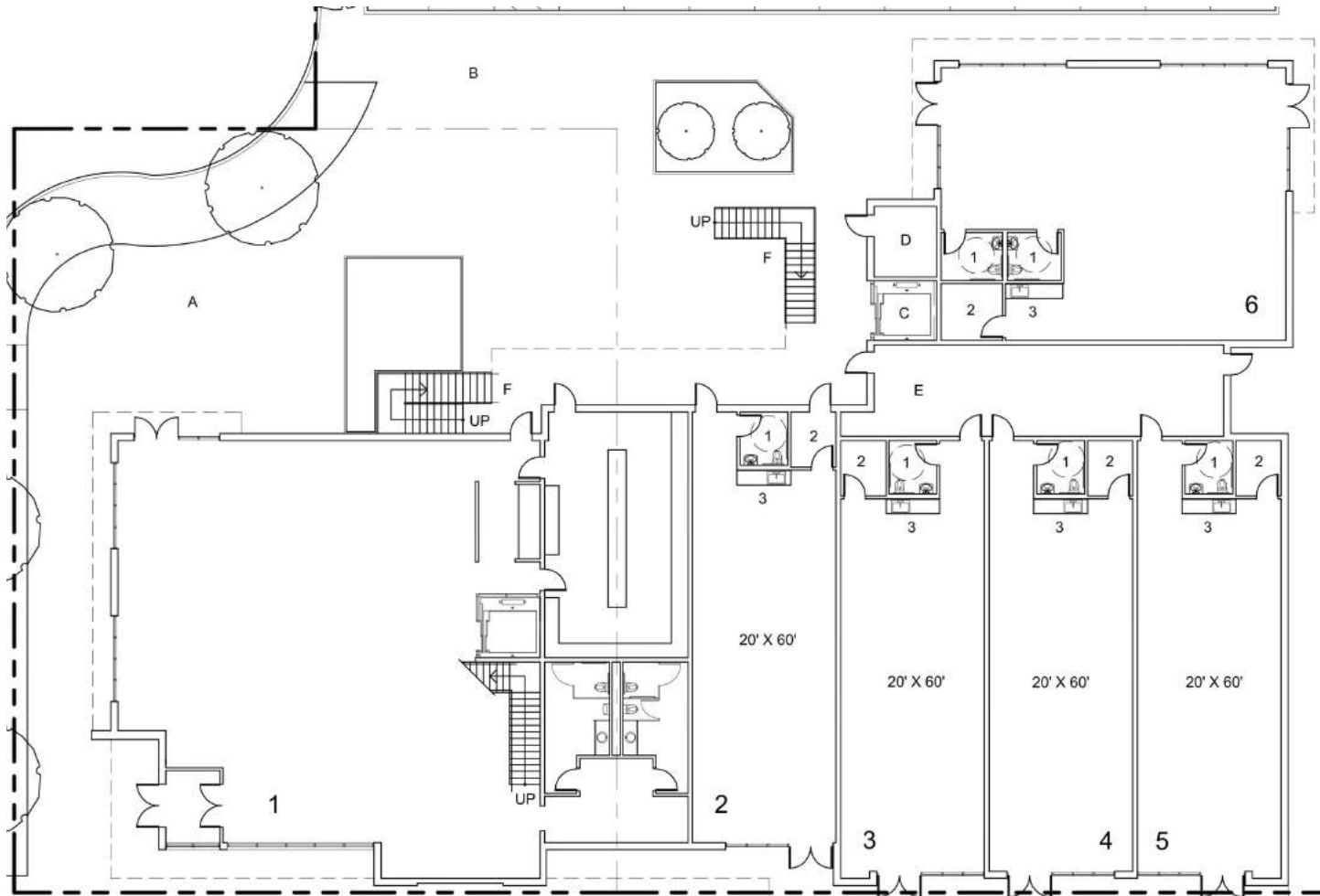
NORTH ELEVATION



EAST ELEVATION



# FIRST FLOOR PLAN



## RESTAURANT

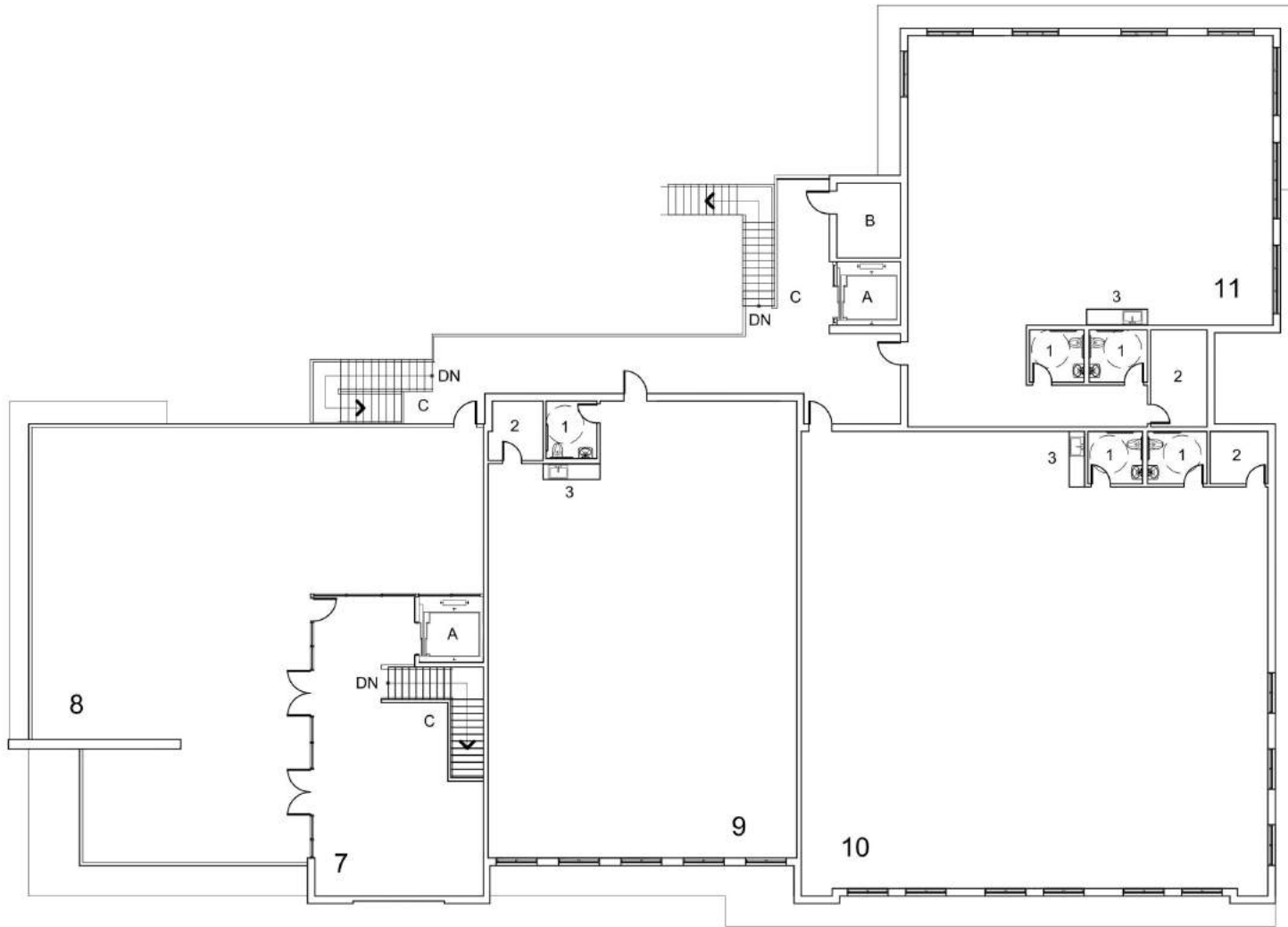
**Suite 1** - 4,538 SF  
w/ 2,405 SF Rooftop  
Seating & Bar

## RETAIL

**Suite 2** - 1,200 SF  
**Suite 3** - 1,200 SF  
**Suite 4** - 1,200 SF  
**Suite 5** - 1,200 SF  
**Suite 6** - 1,827 SF



# SECOND FLOOR PLAN



## RESTAURANT

**Suite 1** - 2,405 SF  
Rooftop Seating & Bar

## OFFICE

**Suite 9** - 2,436 SF  
**Suite 10** - 3,686 SF  
**Suite 11** - 2,353 SF

