

1006 Olive Street

First Floor

St. Louis, MO 63101

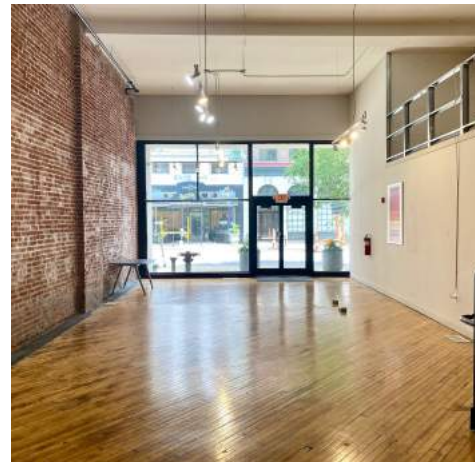
Take a Tour!



FOR LEASE

\$3,110/MO + Electric

- Retail or Office in the Ludwig Lofts
- Approximately 3,110 SF on First Floor & Mezzanine
- Wood Floors and Exposed Brick in the Storefront
- Open Areas and Offices on Both Levels
- Large Storage Room



Eric Schultz

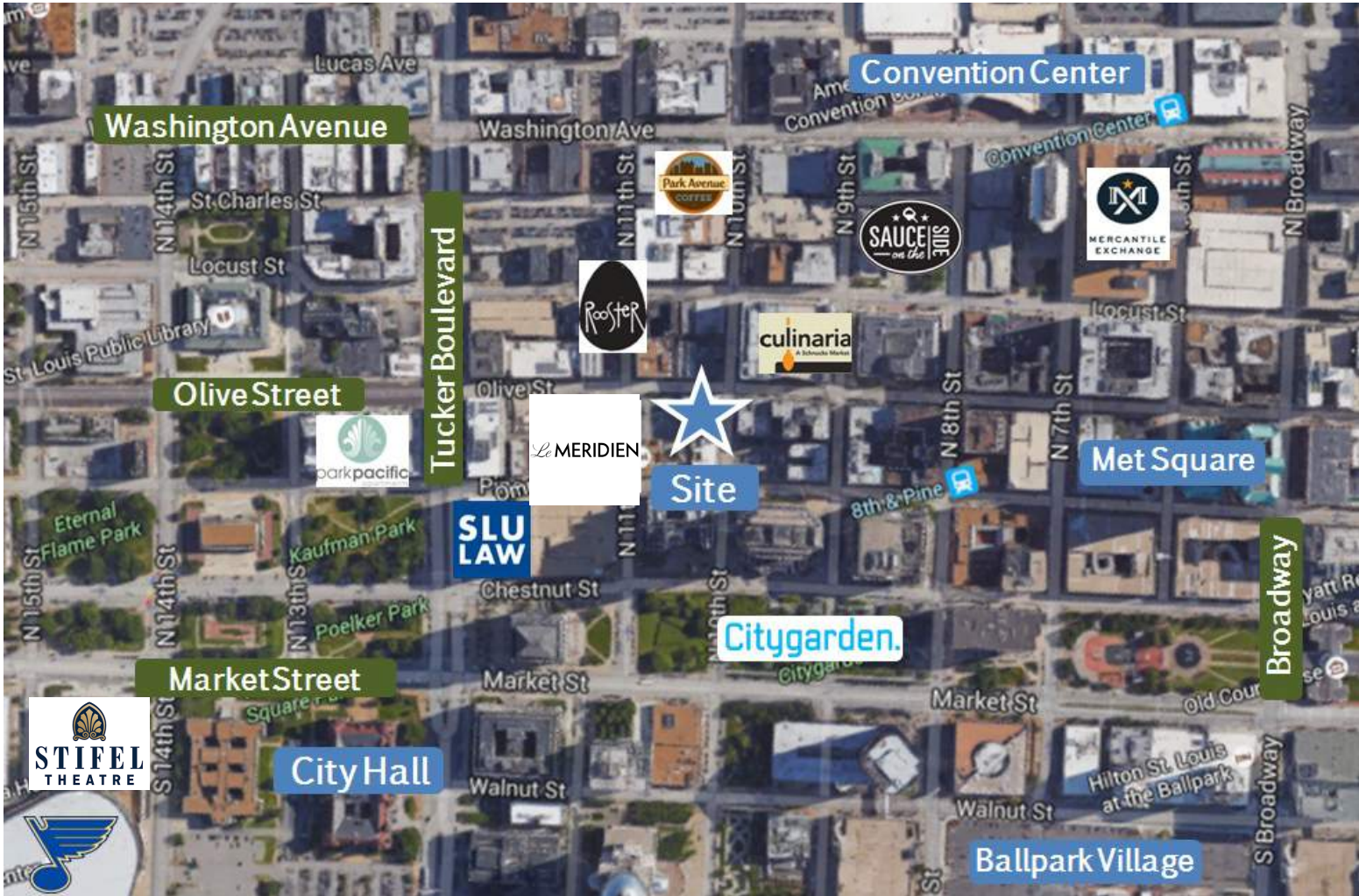
eric@risetothelocation.com
314.332.4417

Mike Cromie

mike@risetothelocation.com
314.428.9738

RISETOHELOCATION.com

2315 Locust Street Suite 2 | St. Louis | MO 63103 | 314.329.0839



TOWER

REAL ESTATE GROUP

RISETOTHELOCATION.com

2315 Locust Street Suite 2 | St. Louis | MO 63103 | 314.329.0839