

THE
220

2208 Locust Street
St. Louis, MO 63103

RETAIL | RESTAURANT
FOR LEASE



TOWER
REAL ESTATE GROUP



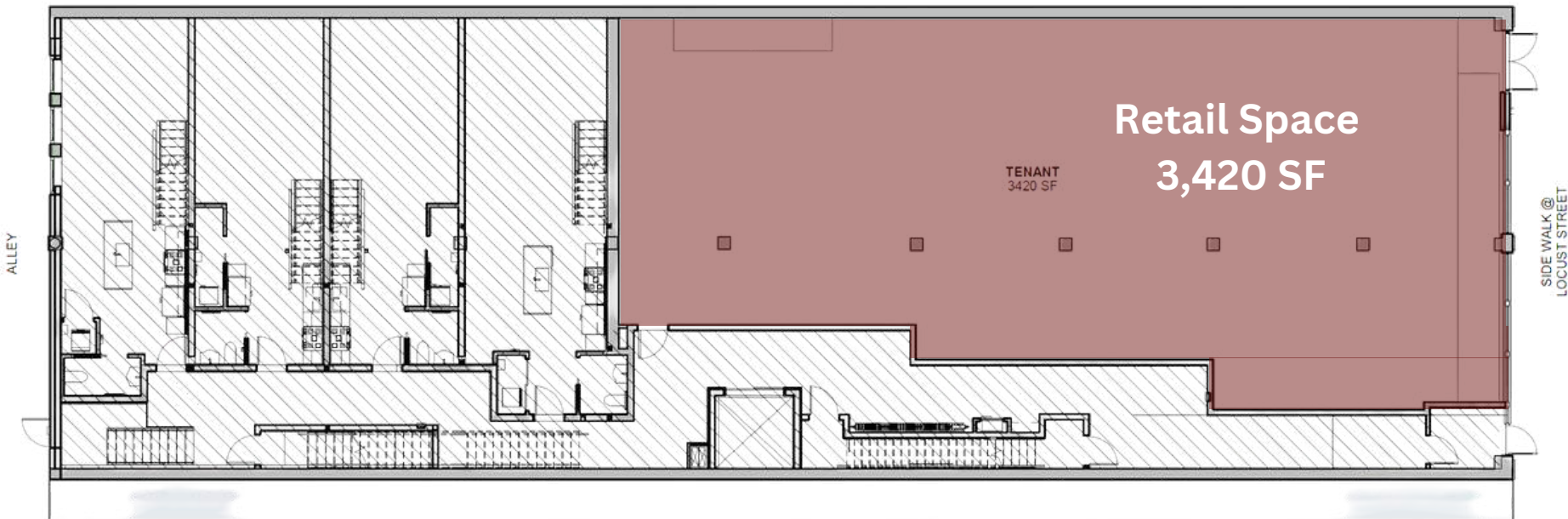
- 3,420 - 5,678 SF
- Retail Location Steps From CITYPARK
- Located at The 22 Apartments, a Newly Renovated Historic Building
- Large Storefront Glass and 16' Ceilings
- Ideal for a Bar or Restaurant
- Front Door is 500' from CITYPARK's SW Entrance



TOWER
REAL ESTATE GROUP

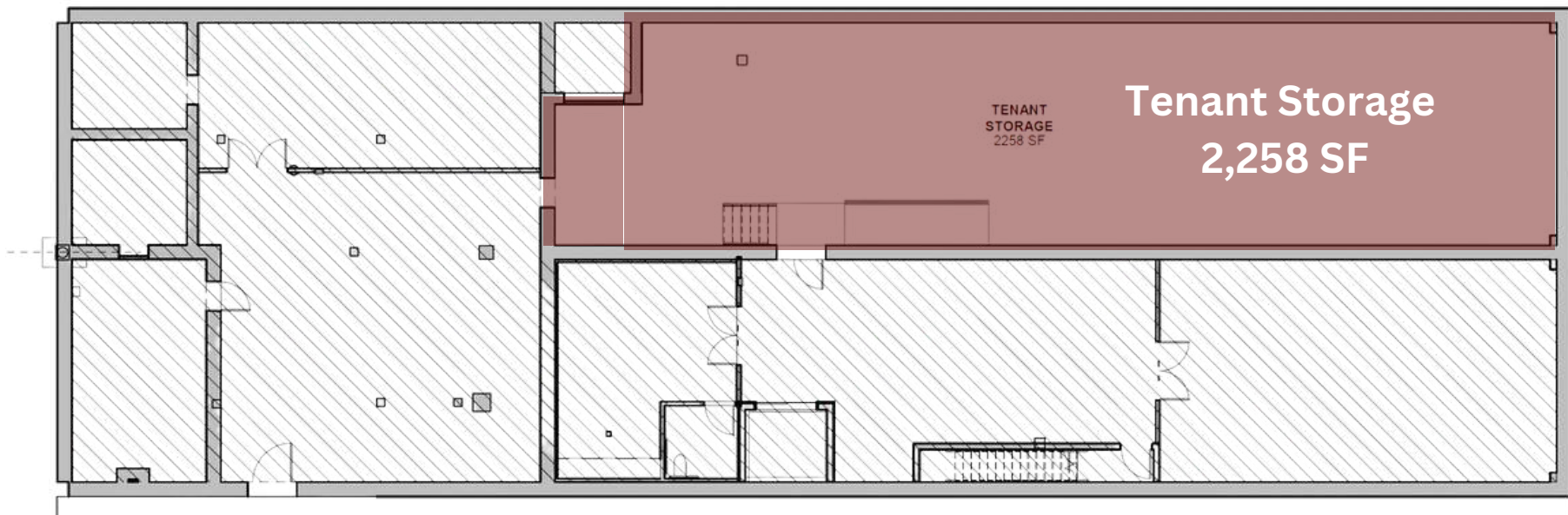


First Floor Retail | \$20/SF NNN



THE
222

Lower Level Storage | \$5/SF NNN



CUSTOMIZABLE SPACE

Delivered White Box with \$40/SF
Tenant Improvement Allowance



27,700 +

employees work in the area on a daily basis

24,000+

proposed visitors to the CITYPARK Stadium

1,894

residential units currently
occupied and being built

BLOCKS

from the MLS CITYPARK
Stadium, Union Station, Enterprise
Center, Midtown Alley and other
Developments in the area





HOTELS



RETAIL

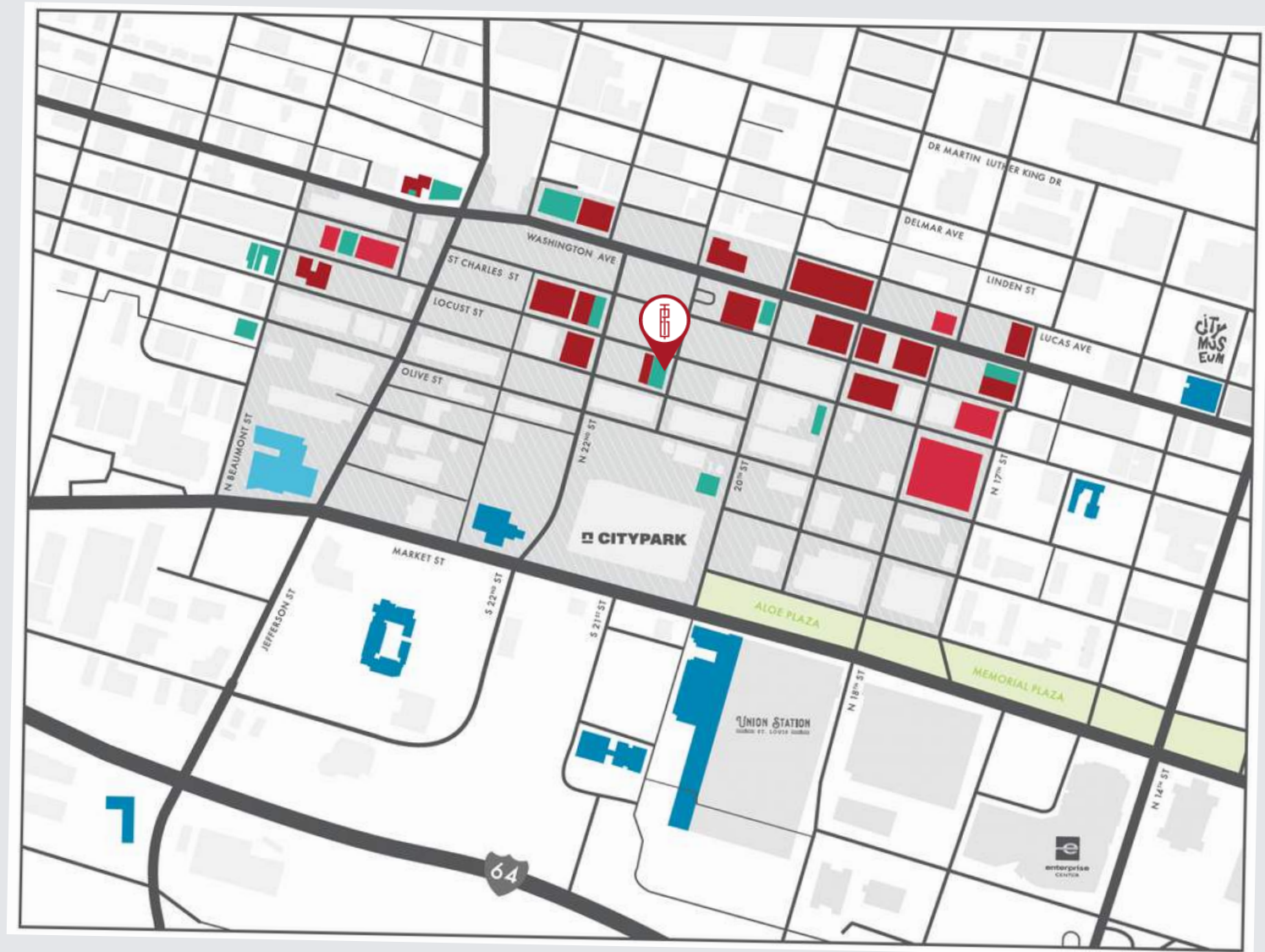


RESIDENTIAL



The 22

2208 Locust



CONTACT BROKERS FOR MORE INFO

Jon Keating

314.250.1114

jon@risetothelocation.com

Mike Cromie

314.324.0000

mike@risetothelocation.com

Jassen Johnson

314.614.6181

jassen@risetothelocation.com



TOWER
REAL ESTATE GROUP