



MARTIN

INTERACTIVE. INSPIRED. UNBELIEVABLE.

JASSEN JOHNSON

314.614.6181

jassen@risetothelocation.com

MIKE CROMIE

314.428.9738

mike@risetothelocation.com

314.329.0839

click me



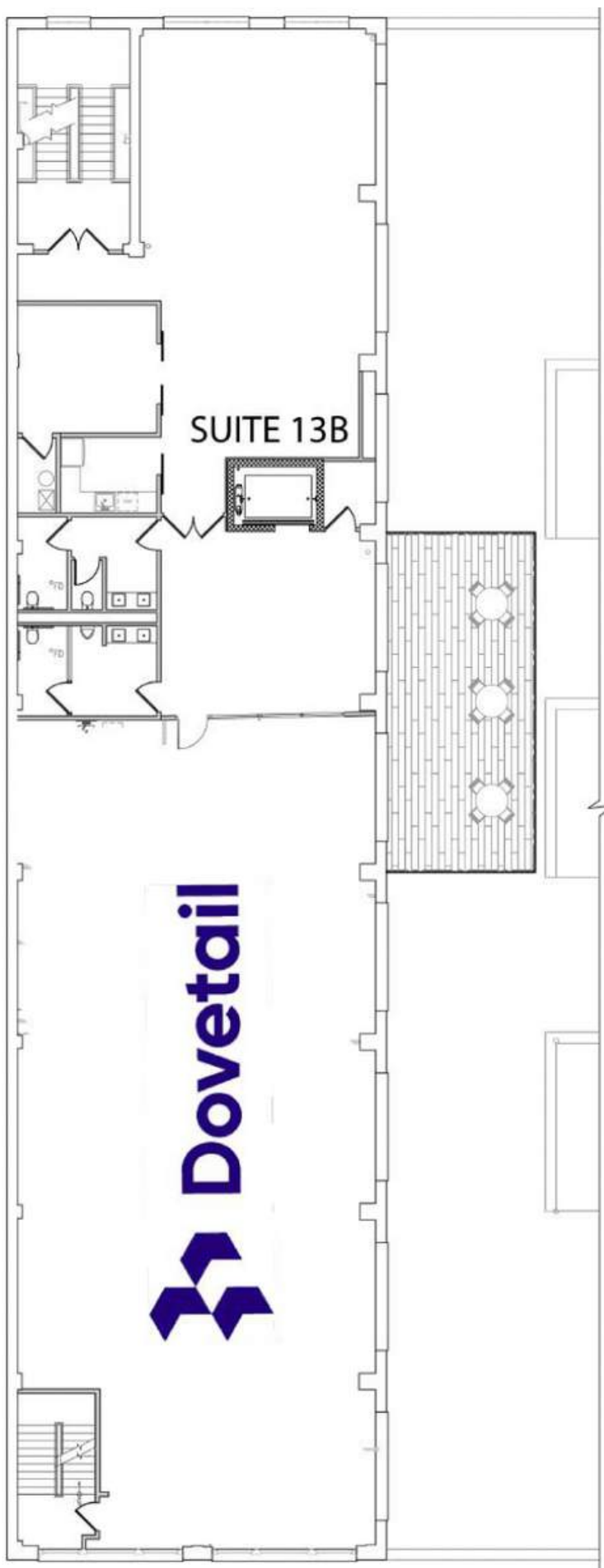
scan me

Take a Virtual Tour



TOWER

REAL ESTATE GROUP



3rd Floor

Suite 13B

1,690 SF

1 Office or Conference Area

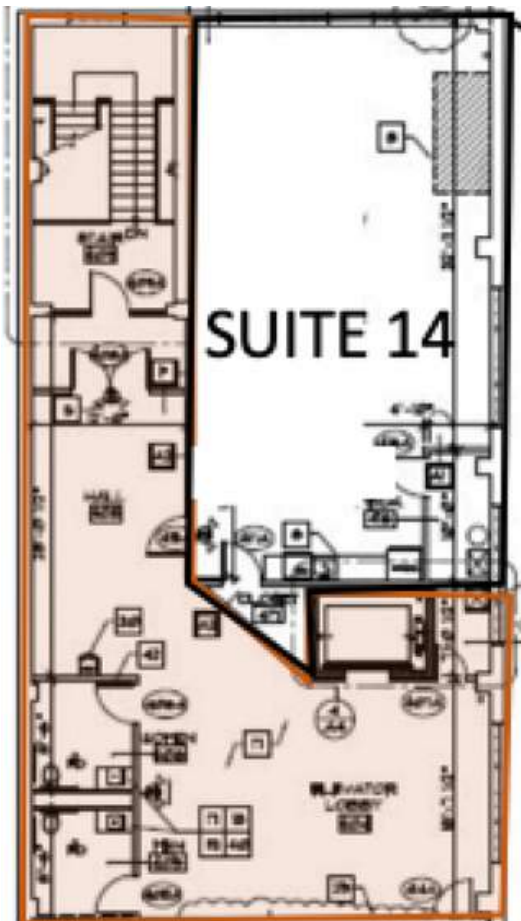
Private Kitchenette

Elevator Served

Open Work Area

\$2,675/MO Modified Gross





SUITE 14

SUITE 15



Orange Design

4th Floor

Suite 14

1,214 SF

Large Windows

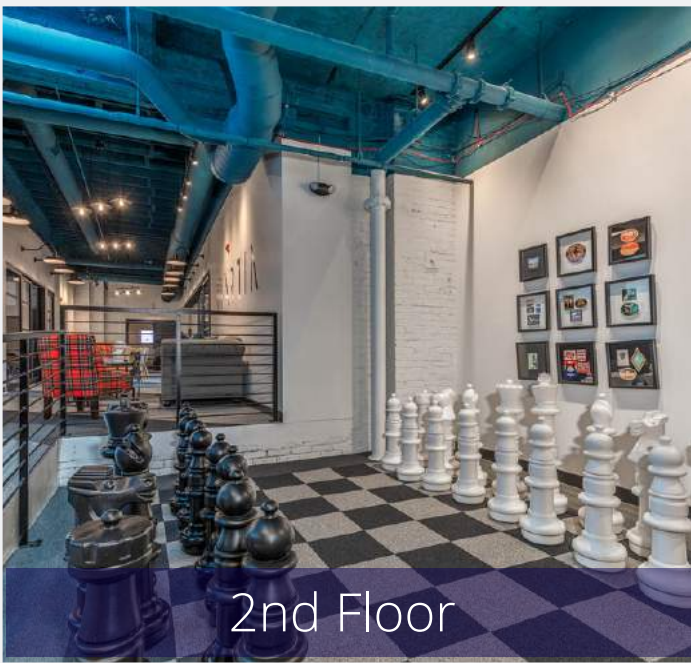
Large Kitchenette

Elevator Served

Open Work Area

\$1,925/MO Modified Gross





2nd Floor

Common Areas

Voice Interaction with Martin

1st Floor Conference Room with Full Kitchen

2nd Floor Conference Room with Wet Bar

Brainstorming & Breakout Areas

Life-Sized Board Games Throughout



2nd FL Conference Room



1st FL Conference Room

Amenities

Tenant

Flexible Leases Allow for Growth

Gated Parking - \$80/MO

Elevator Served

Gigabit Fiber Internet

Neighborhood

Located in St. Louis' Premier Design District

Surrounded by 16+ Restaurants

2 Miles from Future NGA

Development

Blocks from CITYPARK Stadium



Get to where you need.

01

Walkability Score
60



02

Easy Highway Access
40, 44 & 70



03

Bike & Scooter
Friendly



YOUR
FUTURE
NEIGHBORS

