

LOFTS AT THE

# Mac



## 1800 Washington

St. Louis, MO 63103



# RETAIL FOR LEASE



**TOWER**  
REAL ESTATE GROUP





- High Profile Corner Retail Location
- Newly Redeveloped Mixed-Use Building w/ 56 Apartments
- 2,324 SF Available
- Extensive Development in the Primary Trade Area Including 1,000+ New Apartments
- Great Location Drawing Customers From Downtown thru Midtown
- Close Proximity to the \$500M CITYPARK Stadium

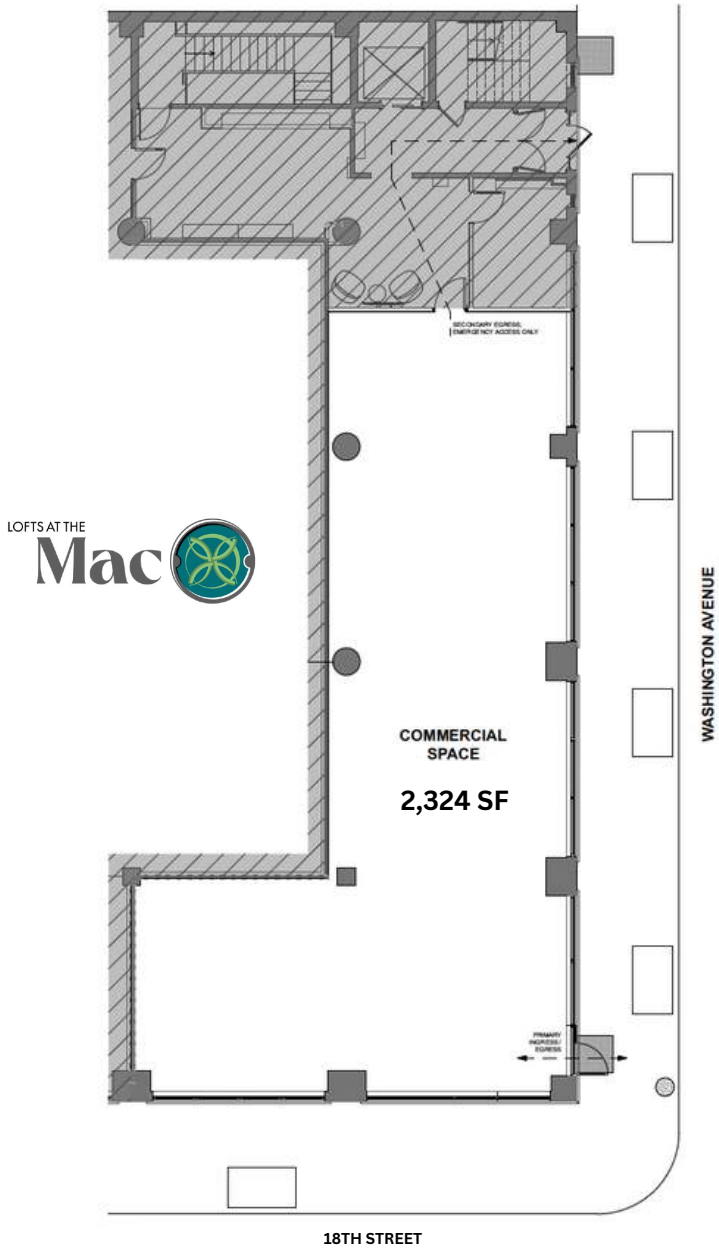


TOWER  
REAL ESTATE GROUP





# First Floor Retail | \$18/SF NNN



**CUSTOMIZABLE SPACE**

Delivered White Box with \$20/SF Tenant Improvement Allowance



# 27,700 +

employees work in the area on a daily basis

# 24,000+

proposed visitors to the CITYPARK Stadium

# 1,894

residential units currently occupied and being built

# BLOCKS

from the MLS CITYPARK Stadium, Union Station, Enterprise Center, Midtown Alley and other Developments in the area







HOTELS



RETAIL



RESIDENTIAL



LOFTS AT THE

Mac



CONTACT BROKERS FOR MORE INFO

**Mike Cromie**  
314.324.0000  
mike@risetothelocation.com

**Eric Schultz**  
314.332.4417  
eric@risetothelocation.com



TOWER  
REAL ESTATE GROUP