



# 4170 Manchester

ST. LOUIS, MO 63110



**TOWER**

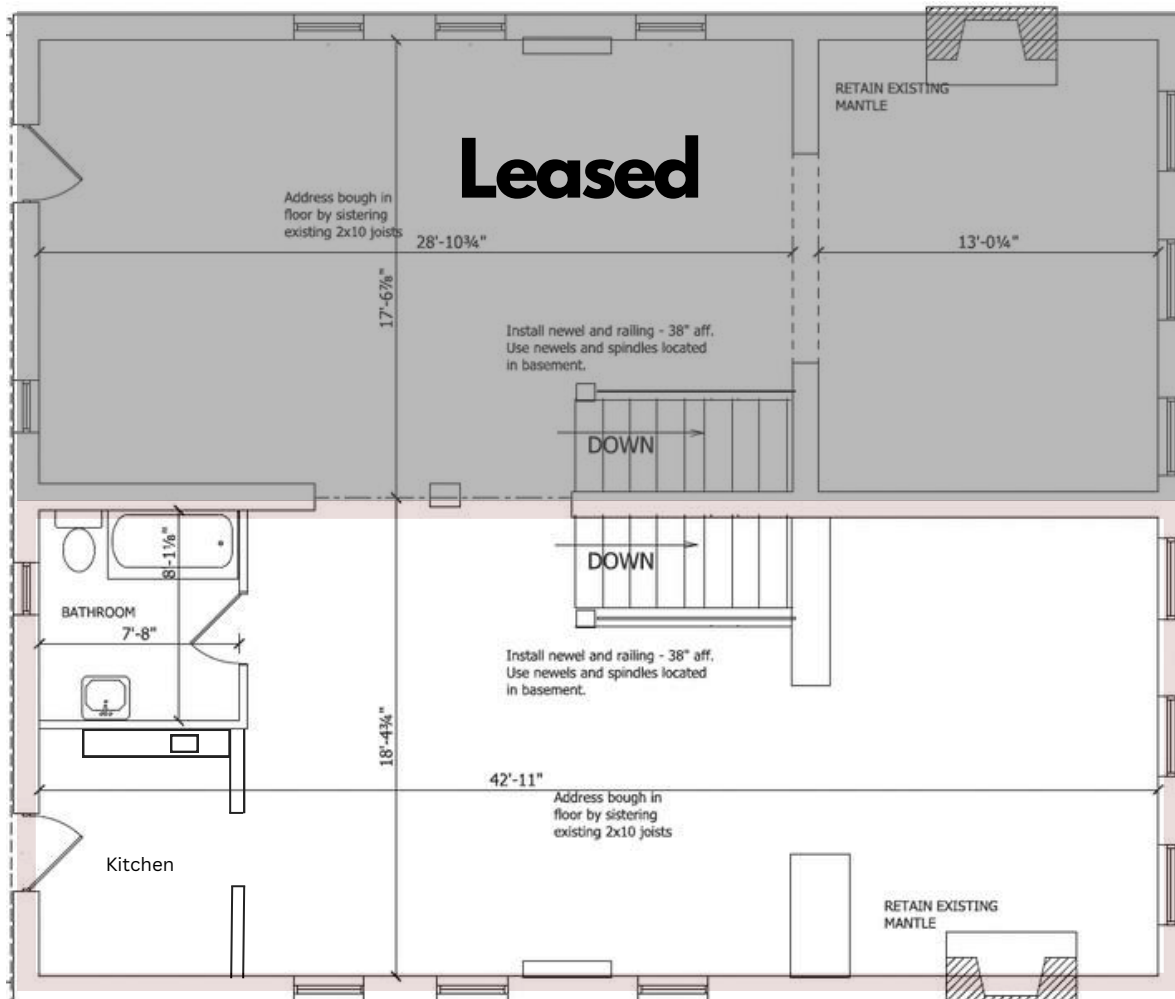
REAL ESTATE GROUP

314.329.0839  
risetothelocation.com

- Approx. 800 SF
- Second Floor Office in the Grove
- Recently Renovated w/ Wood Floors and Exposed Brick
- Kitchenette and Bathroom in Suite
- For Lease: \$1,400/MO Full Service

Mike Cromie Jon Keating  
314.428.9738 314.698.3597

mike@risetothelocation.com jon@risetothelocation.com



- Premier Location Walkable to Numerous Shops, Dining and Entertainment
- Centrally Located and Close to Highways and Public Transportation
- Easy Access to Highway 64



