

RETAIL | BAR FOR LEASE



4170 Manchester St. Louis, MO 63110

Property Highlights

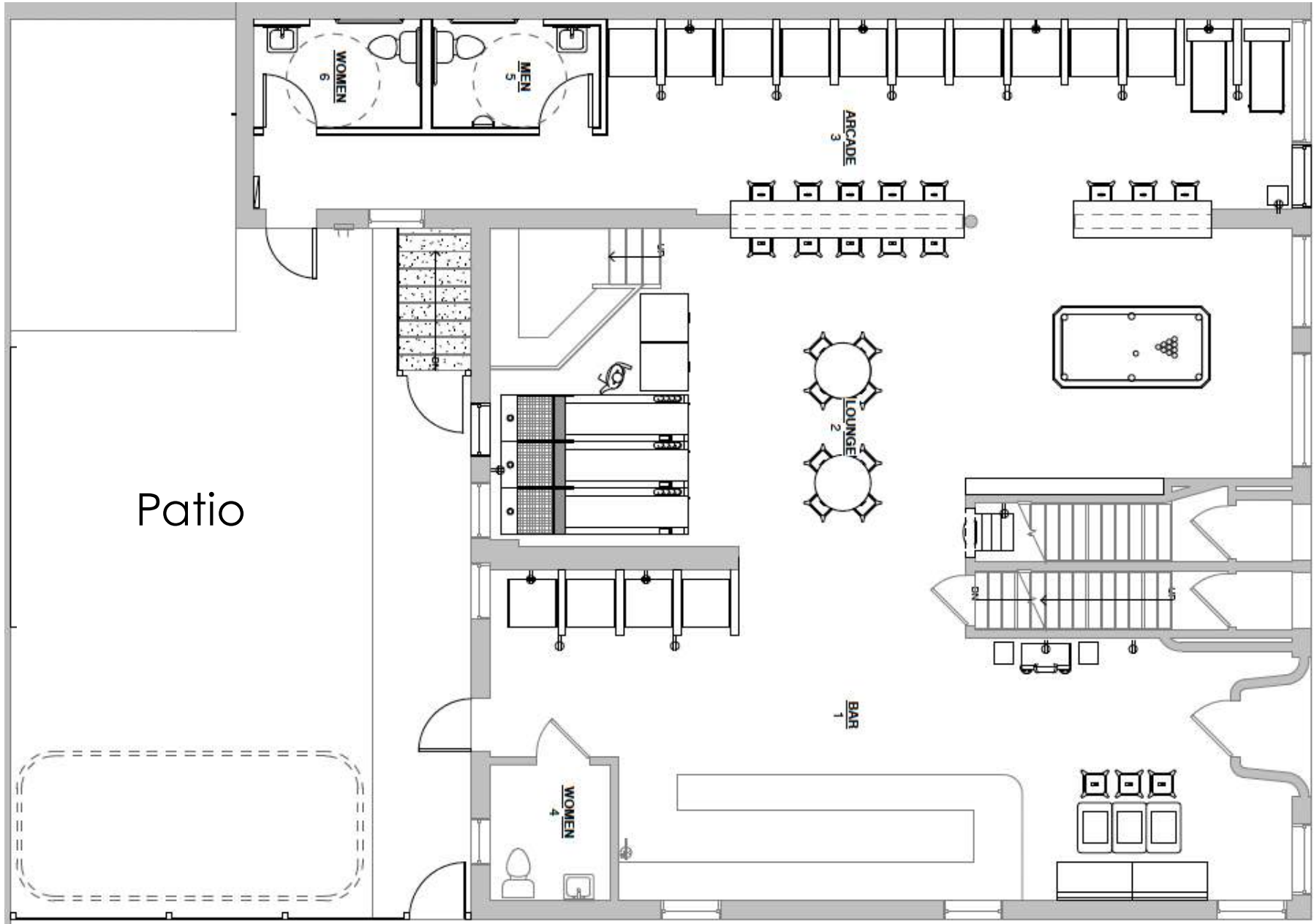
- Former Bar Space in the Grove Ready for Your Concept
- 2,500 SF Plus Partially Covered Outdoor Patio
- In the Heart of the Grove - A Premier STL Entertainment District
- Existing Bar and Three Restrooms
- Basement Storage Available
- Recently Renovated Property with Newer Systems
- Hard Corner Location with Great Visibility

For Lease

\$4,583/MO NNN



Floor Plan



Location



CONTACT BROKERS FOR MORE INFO

Mike Cromie

314.324.0000

mike@risetothelocation.com

Jon Keating

314.250.1114

jon@risetothelocation.com



TOWER

REAL ESTATE GROUP