

Retail | Bar | Restaurant Available in The Grove



TOWER
REAL ESTATE GROUP

4195 Manchester
St. Louis, MO 63110



Bar Area



Music Venue



2nd fl Office/Apt

RISETOTHELOCATION.com

2315 Locust Street | Suite 2 | St. Louis, MO 63103 | 314.329.0839

8,203 SF Total

6,633 SF 1st Fl Bar/Retail

1,570 SF 2nd Fl Office/Apt

Can Be Combined or Separate

**Located in STL's Premier
Entertainment District**

**Multiple Entrances &
Visibility on Manchester**

**Includes: Bar, Stage,
Walk-In, Heavy Electric,
Offices, 2nd Fl Kitchen**

**1st Floor: \$16.00/SF NNN
2nd Floor: \$14.50/SF NNN**



TOWER
REAL ESTATE GROUP

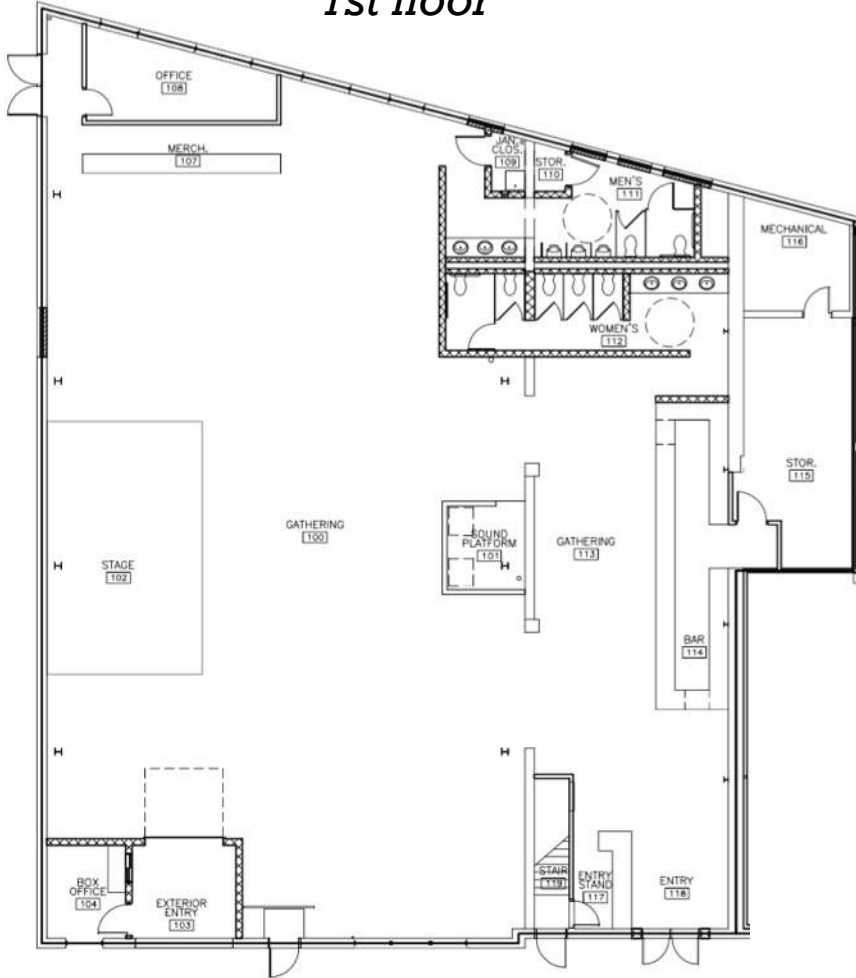
RISETOTHELOCATION.com

2315 Locust Street | Suite 2 | St. Louis, MO 63103 | 314.329.0839

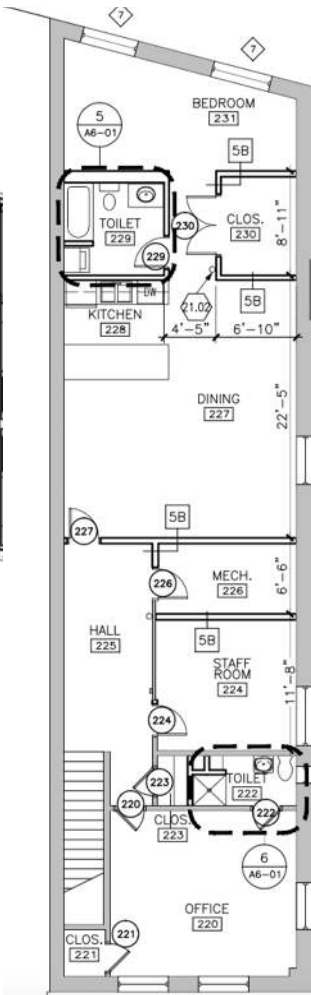
Floor Plans



1st floor



2nd floor



CONTACT BROKER FOR DETAILS

Mike Cromie
mike@risetothelocation.com
314.324.0000

Jon Keating
jon@risetothelocation.com
314.250.1114

RISETOTHELOCATION.com

2315 Locust Street | Suite 2 | St. Louis, MO 63103 | 314.329.0839