

OFFICE FOR LEASE

2200 Locust Street

St. Louis, MO 63103



Property Information:

- 3,400 SF Office One Block from CITYPARK
- First Floor Suite with Excellent Window Lines
- Reception, Conference Room, Break Area, 2 Offices
- Located in the Burgeoning City Commons Neighborhood
- Surrounded By Almost \$1B in Development Since 2019
- Easy Access to Highways and Downtown
- Walk to Lunch, Coffee or a CITY SC Game!



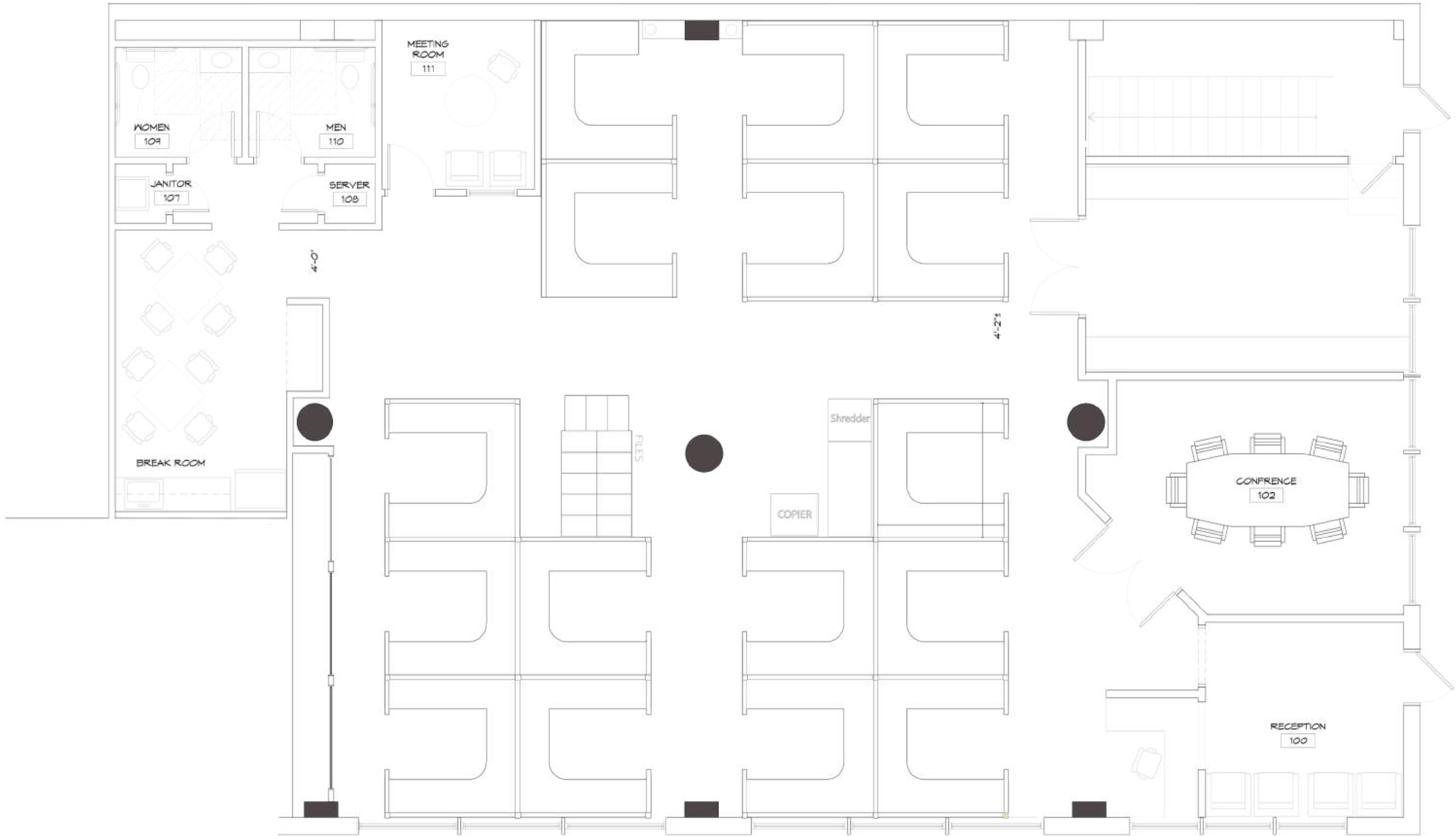
For Lease: \$4,800/MO NNN



Interior Photos



Floor Plan





27,700 +

employees work in the area on a daily basis

23,423

average St. Louis CITY SC game attendance

1,894





residential units currently occupied and being built

BLOCKS

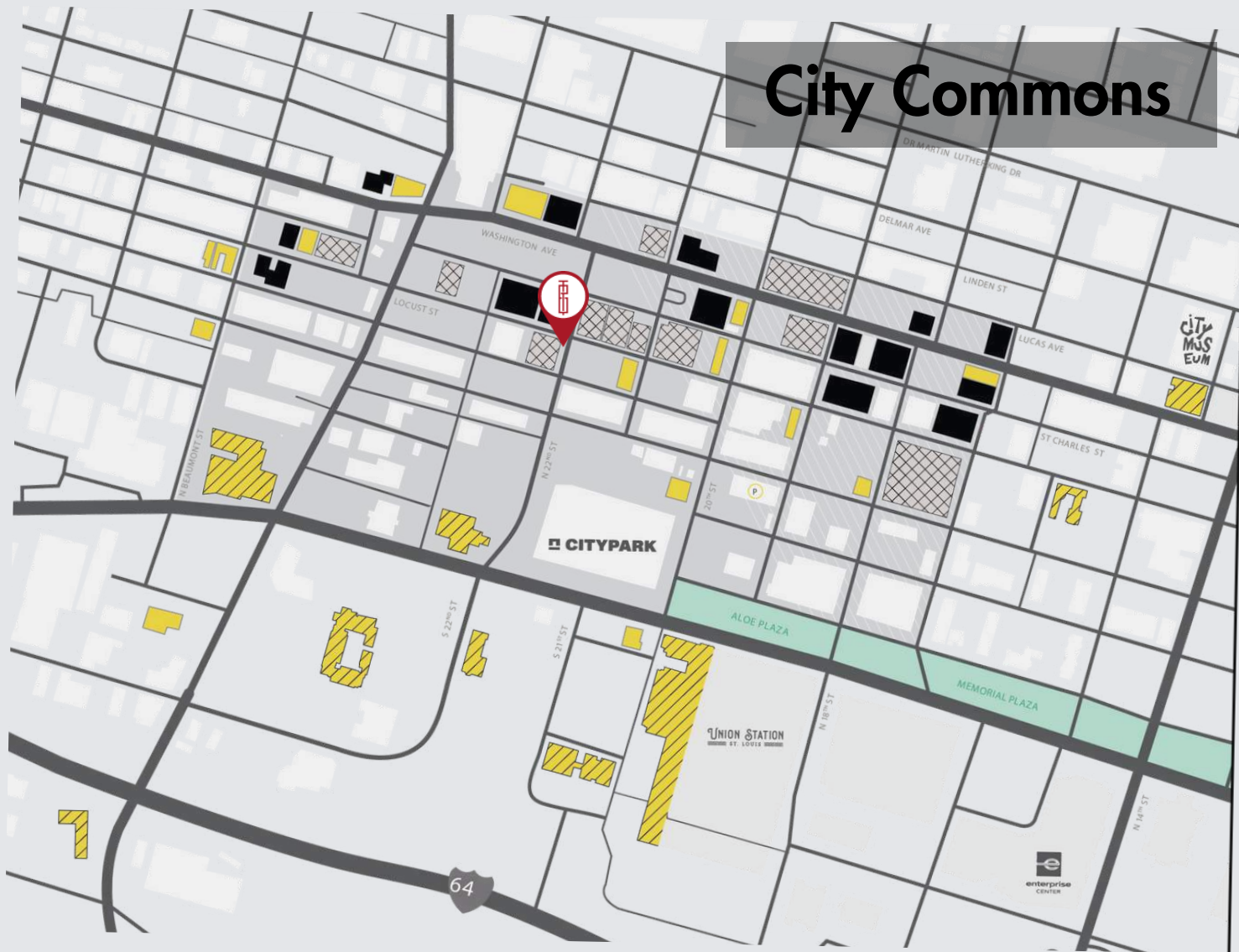
from the MLS CITYPARK Stadium, Union Station, Enterprise Center, Midtown Alley and other Developments in the area



City Commons

-  HOTELS
-  RETAIL
-  RESIDENTIAL
-  AVAILABLE PROPERTIES

 2200 Locust



CONTACT BROKERS FOR MORE INFO



Mike Cromie
314.324.0000
mike@risetothelocation.com

Jassen Johnson
314.614.6181
jassen@risetothelocation.com