

**3026-3030 Locust Street**

St. Louis, MO 63103

**CREATIVE  
OFFICE SPACE**  
FOR LEASE | FOR SALE





Take A  
Virtual Tour



18,674 Total SF (3026 Locust 9,894; 3030 Locust 8,780 SF)  
A Mix of Modern Industrial and Historic Architectural Features  
Gated Parking Lot For 13 Cars + Additional Parking in City Lot  
Elevator Served + Connected at Multiple Points on Both Floors  
**Offered At \$18.50/SF NNN**



A modern industrial-style office interior. The space features a high ceiling with exposed wooden beams and a large, multi-bladed ceiling fan. The floor is made of polished wood. In the foreground, there are several round tables with dark metal frames and brown leather chairs. In the background, there is a kitchen area with dark cabinets, stainless steel appliances, and a large window that looks out onto a balcony. The overall aesthetic is clean, functional, and contemporary.

## ***3026 Locust Features***

- First Floor Training Room w/ Connected Conf
- Center Core of Office and Conference Rooms
- Open Work Areas
- Generous Kitchen and Collaboration Areas
- Zoom Rooms on 2nd Floor
- Fitness Room + Full Bathrooms w/ Shower
- Rooftop Deck and Ground Level Patio

***For Sale: \$1,500,000***



3026 Photos



2nd Floor



Fitness Room



Zoom Room



Open Work Area



Training Room



# ***3030 Locust Features***

- Unique Architectural Elements including Glass Box Conference Room Center Piece
- Reception Area, Full Kitchen, Zen Room
- Mutiple Private Offices
- Small & Large Meeting Rooms
- Open Work Area w/ Mobile Desk Pods
- Rock Climbing Wall
- Rooftop Deck and Ground Floor Patio w/ Glass Garage Door Opening to the Interior

***For Sale: \$1,400,000***





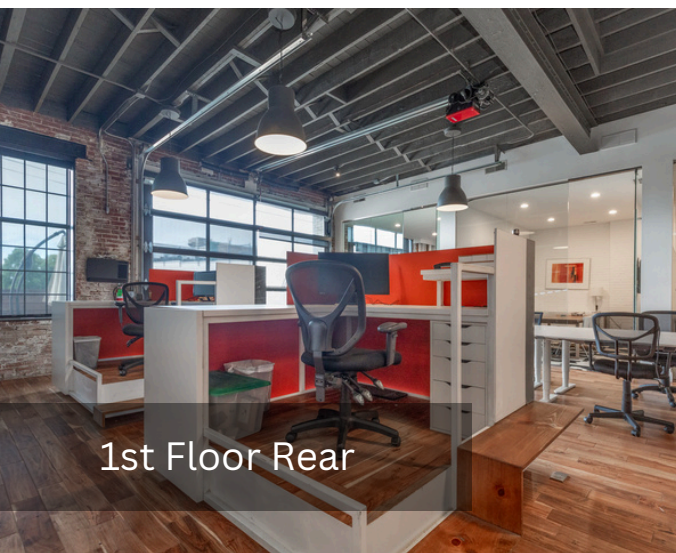
# 3030 Photos



2nd Floor Lobby



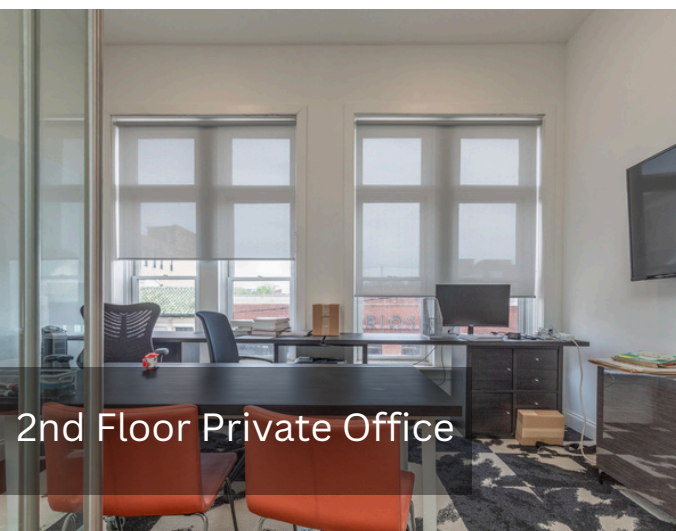
Rooftop Deck



1st Floor Rear



1st Floor Kitchen & Climbing Walls

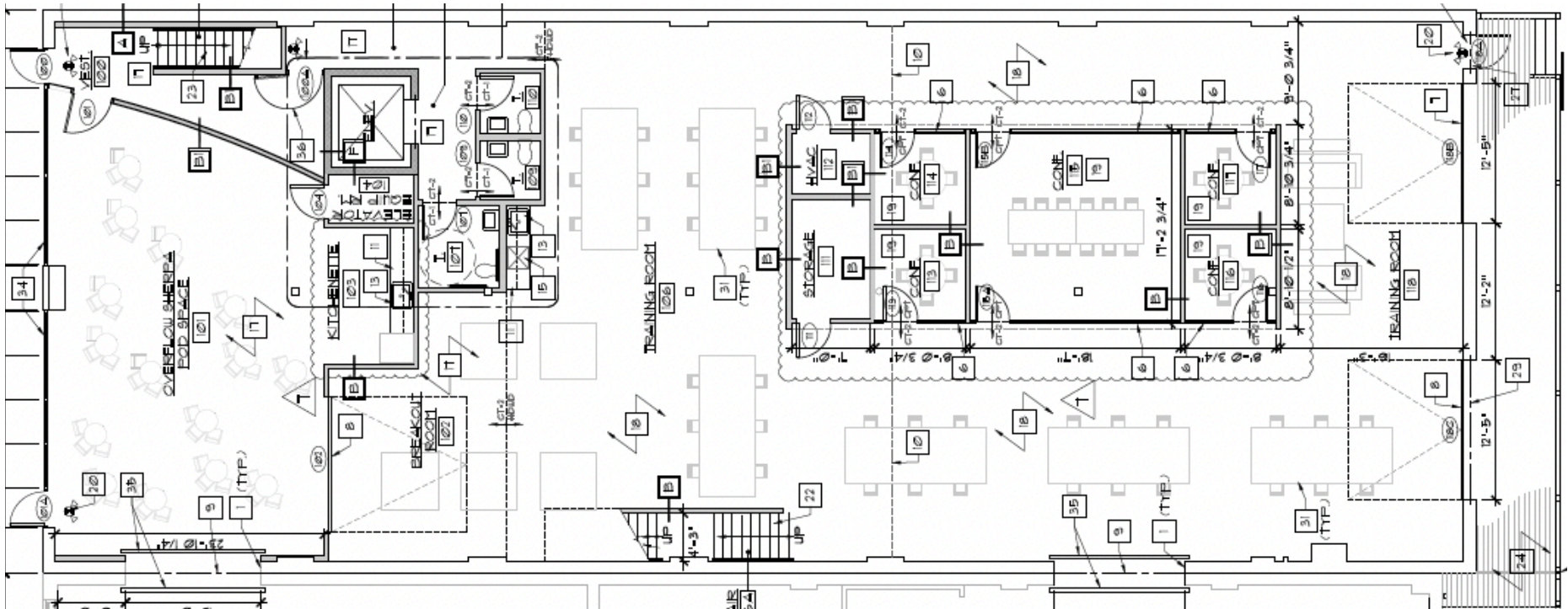


2nd Floor Private Office

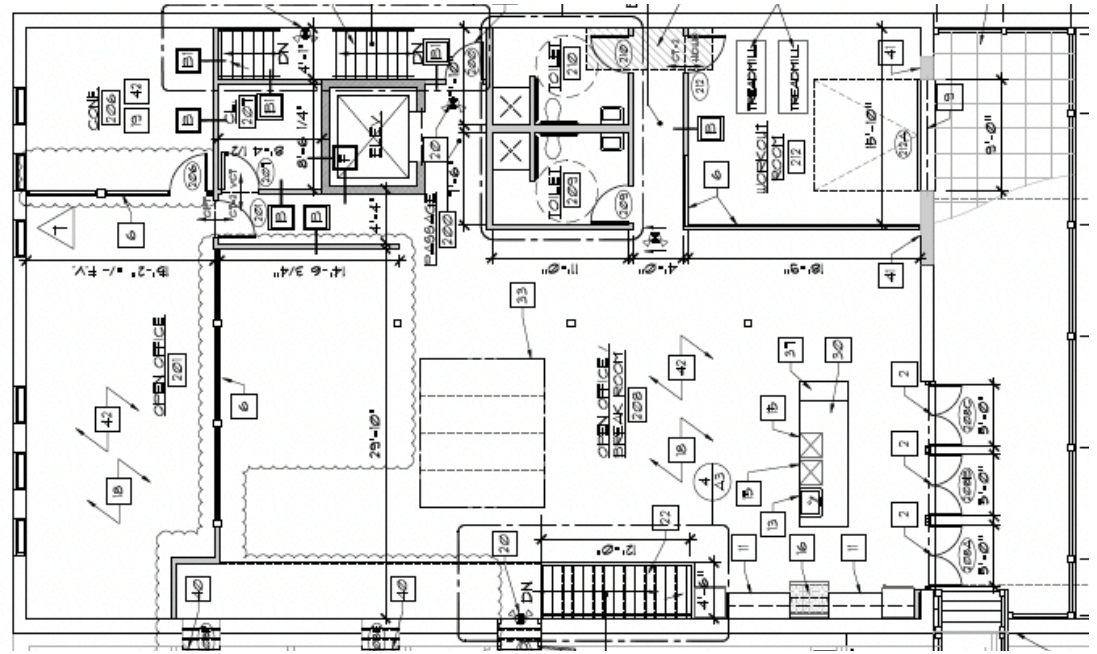


# 3026 Floor Plan

**1st Floor  
6,294 SF**



**2nd Floor  
3,600 SF**

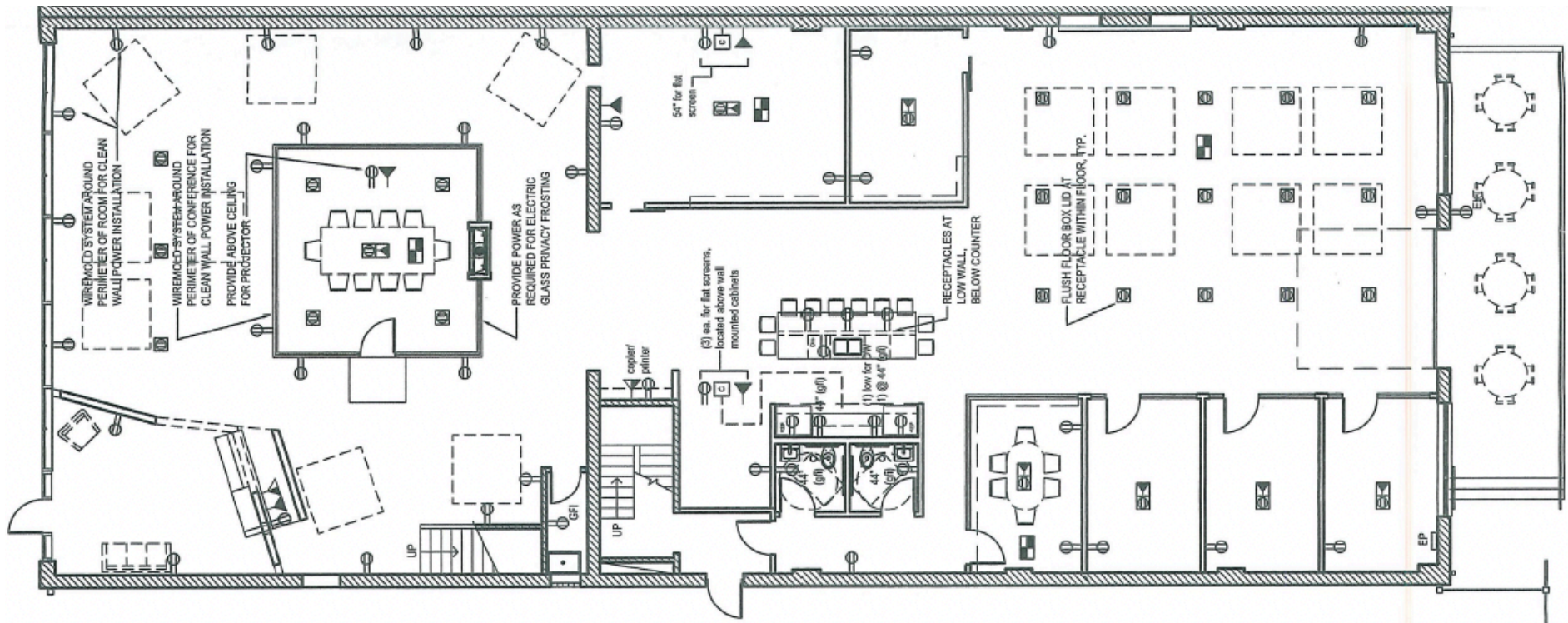
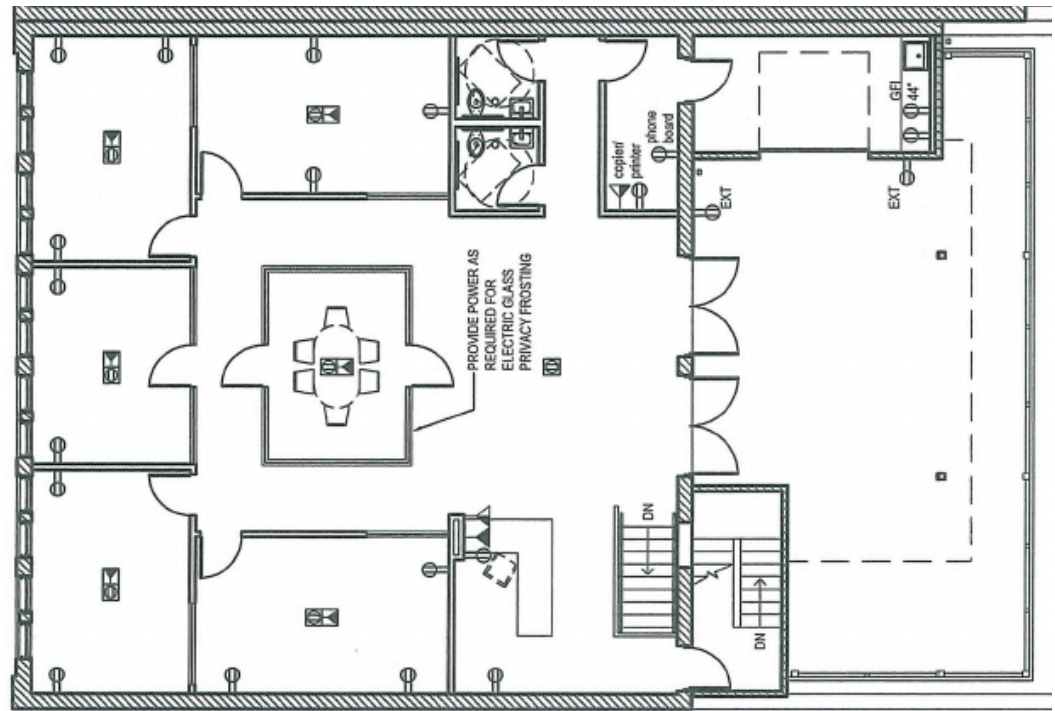




# 3030 Floor Plan

1st Floor  
6,110 SF

2nd Floor  
2,670 SF





## SITUATED IN THE HEART OF MIDTOWN ALLEY (WWW.MIDTOWNALLEY.COM) - ST. LOUIS'S DESIGN DISTRICT



CONTACT BROKERS FOR MORE INFO



**Mike Cromie**  
314.324.0000  
mike@risetothelocation.com

**Jassen Johnson**  
314.614.6181  
jassen@risetothelocation.com