



2704 Locust
St. Louis, MO 63103

RESTAURANT FOR LEASE



TOWER
REAL ESTATE GROUP

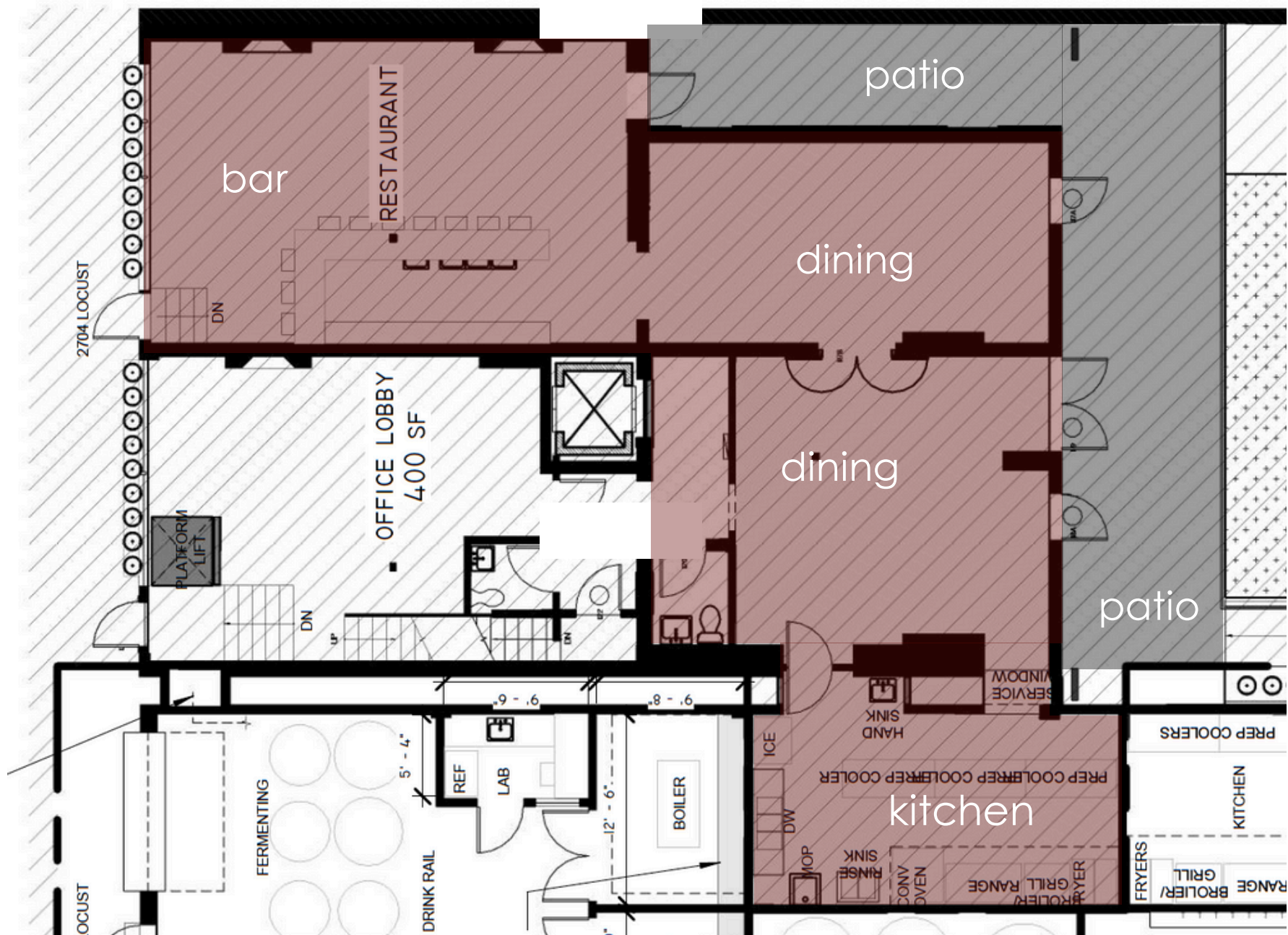


- 1,950 SF + 650 SF Patio Space
- Located on the 1st Floor with Rear Patio
- Recently Renovated & Equipment Included
- Located in the City Commons - Blocks from Energizer Park
- For Lease: \$4,050/MO Plus Utilities



TOWER
REAL ESTATE GROUP





Equipment List Available Upon Request



27,700 +

employees work in the area on a daily basis

24,000+

Visitors to Energizer Park & Chaifetz Arena

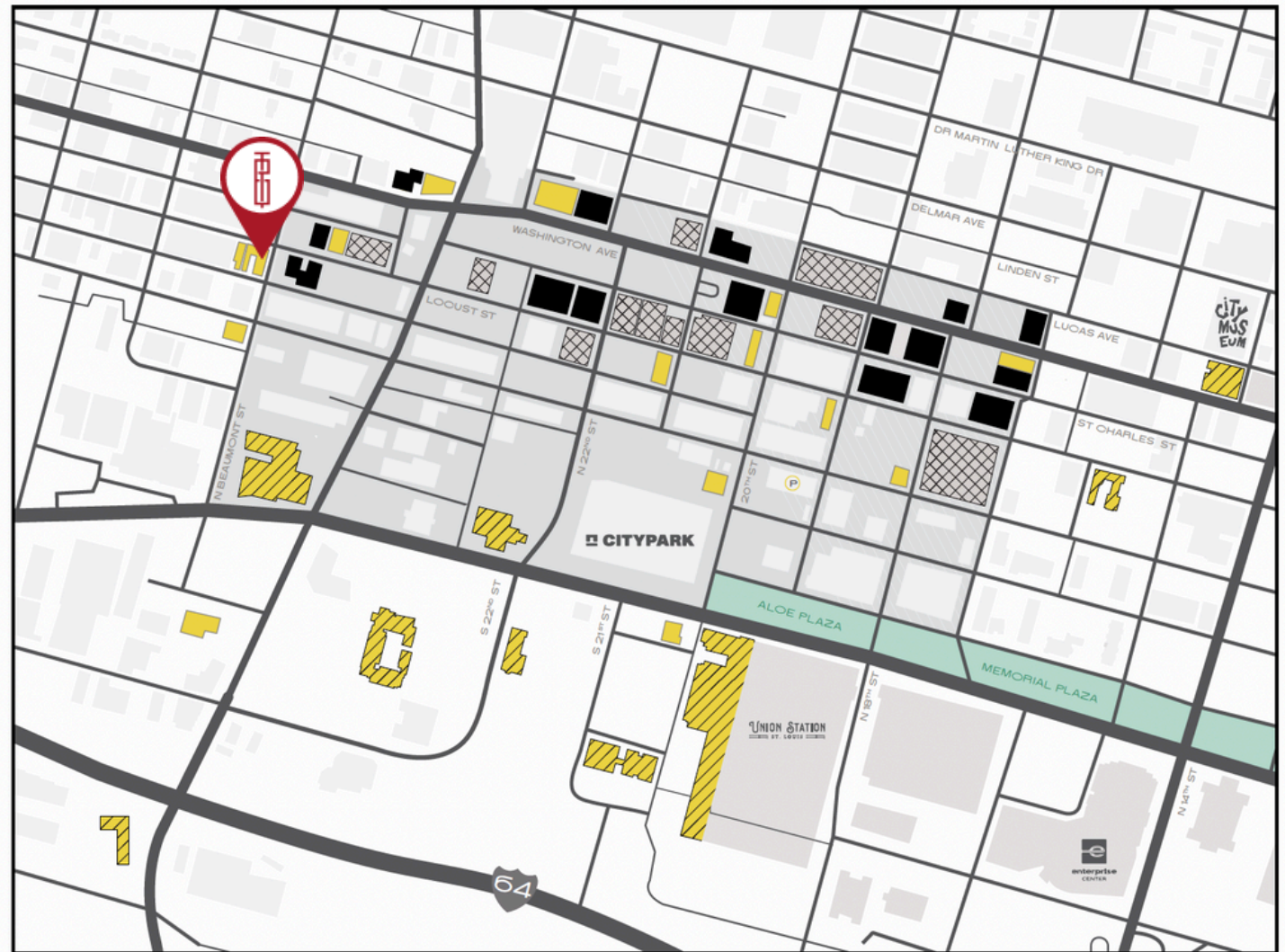
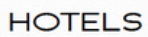
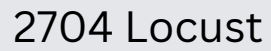
1,894

residential units currently
occupied and being built

BLOCKS

from the MLS Energizer Park
Stadium, Chaifetz Arena, St.
Louis University, Harris Stowe
University





Allyson Mace

314.629.8004

allyson@risetothelocation.com

Jassen Johnson

314.614.6181

jassen@risetothelocation.com

