

5858 Nina Place

#3E St. Louis, MO 63112



— FOR SALE: **\$199,000** —



ABOUT PROPERTY

Experience the best of urban living in this top-floor condo nestled in the tree canopy of Skinker DeBaliviere. With iconic Forest Park at your doorstep, spontaneous nights out in the Loop, and quiet evenings curling up fireside, this two-bedroom, two-bath home offers a lifestyle both vibrant and serene. The open layout is filled with natural light, enhanced by skylights and salvaged wood floors. A spacious living room with built-in bookcases, bay window, and fireplace flows into a daylit four-season sunroom. The updated kitchen opens to a separate dining area, and the unit includes in-unit laundry, generous closet space, south deck, secure gated parking, and additional storage. Just a short walk to Washington University, MetroLink, and local favorites. Eligible for WashU's "Live Near Your Work" grant program. More than just a condo, it's a lifestyle — private, peaceful, and perfectly placed.

GET IN TOUCH

www.risetothelocation.com

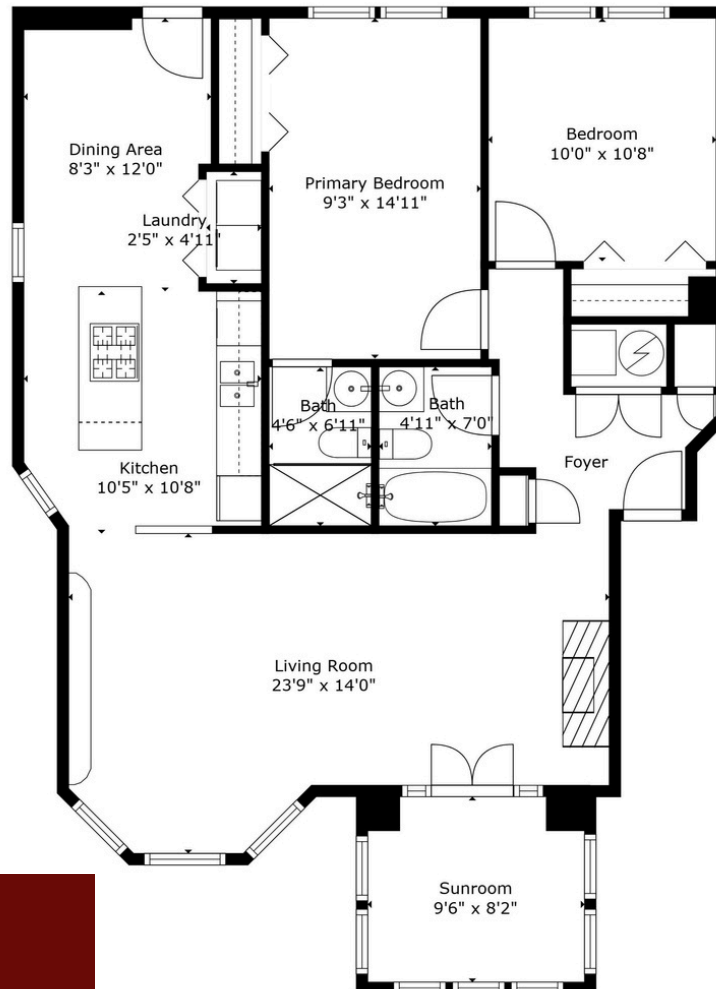
ROCCO DANNA

314.324.0000

ROCCODANNA@ELEVATEBUILDING.COM



TOWER
REAL ESTATE GROUP



FLOOR PLANS