



2010 S 8TH STREET
ST. LOUIS, MO 63108



TOWER

REAL ESTATE GROUP

Mike Cromie
314.324.0000
mike@risetothelocation.com



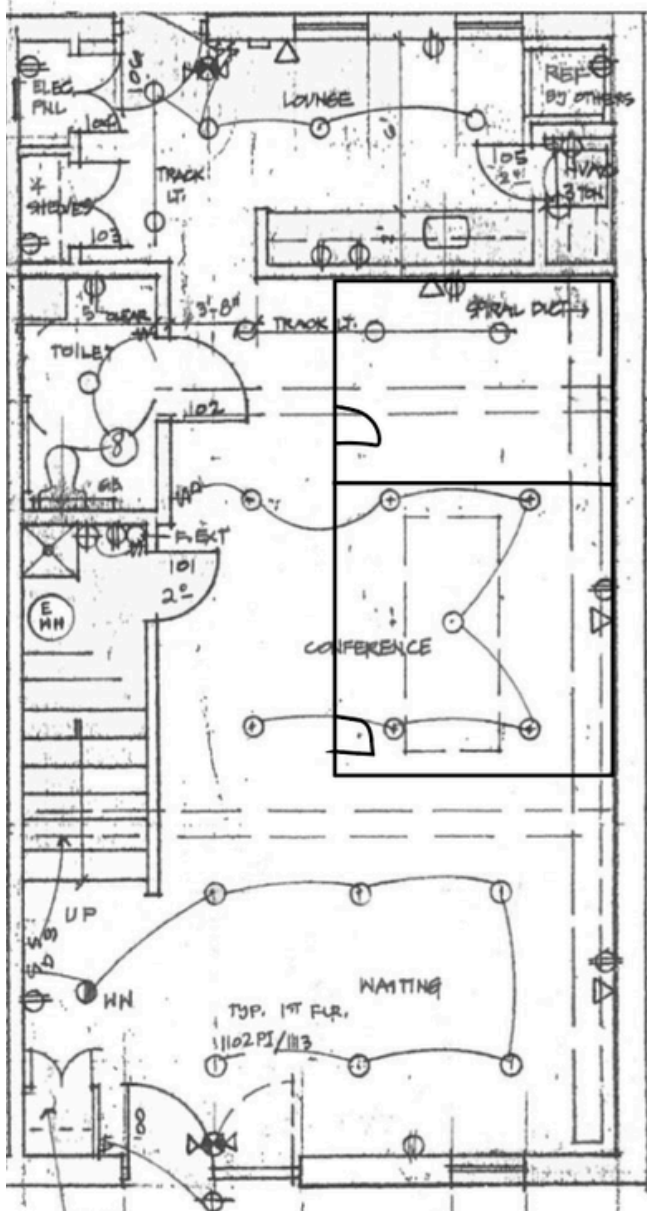
- Modern Office Space in the Historic Soulard Neighborhood
- Approximately 1,820 SF on Two Levels
- Five Offices, Separate Conference Room, Lounge Area and Kitchen
- One Parking Space Included in the Gated Parking Lot
- Private Patio Off the Kitchen
- Ideal Space for Law Firm, Counseling Practice, Non-Profit or Medical User
- Fantastic Walkability to Several Food and Coffee Options

For Lease:
\$2,100/MO
Plus CAM Fees &
Utilities

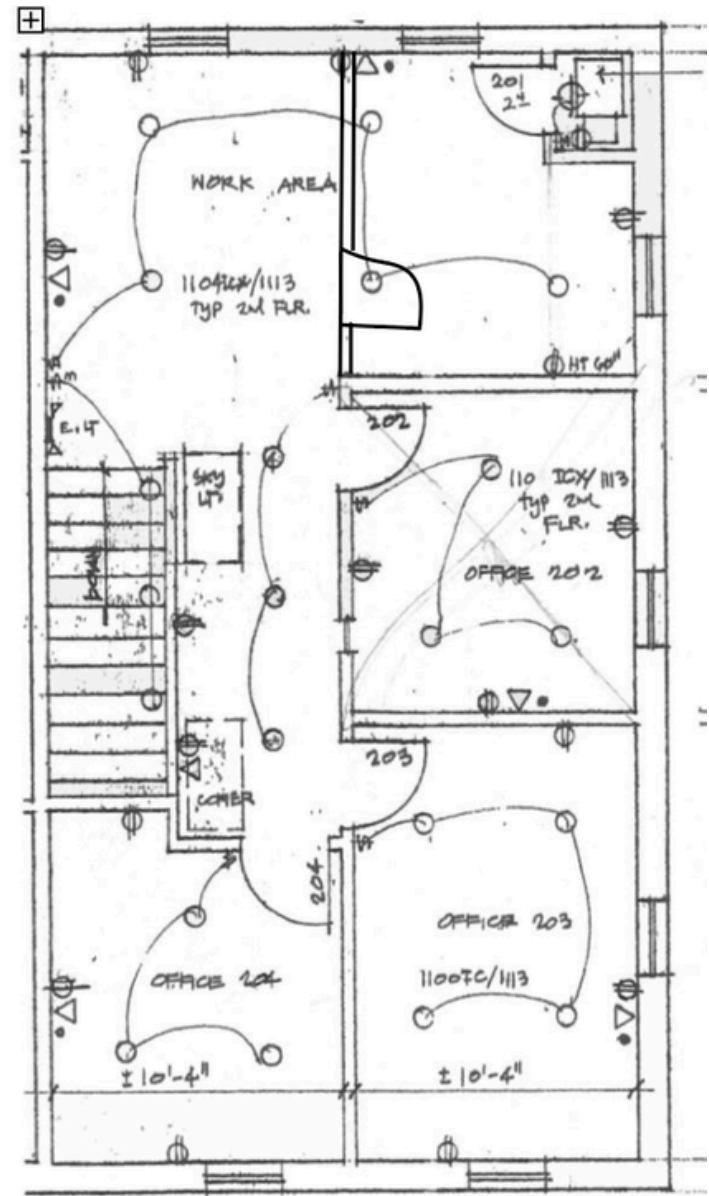




1st Floor



2nd Floor



CONTACT BROKERS FOR MORE INFO

Mike Cromie

314.324.0000

mike@risetothelocation.com



TOWER
REAL ESTATE GROUP