



**2010 S 8<sup>TH</sup> STREET  
ST. LOUIS, MO 63108**

**\*1<sup>ST</sup> MONTH FREE  
ON NEW LEASE\***



**T O W E R**

REAL ESTATE GROUP

Mike Cromie  
314.324.0000  
[mike@risetothelocation.com](mailto:mike@risetothelocation.com)



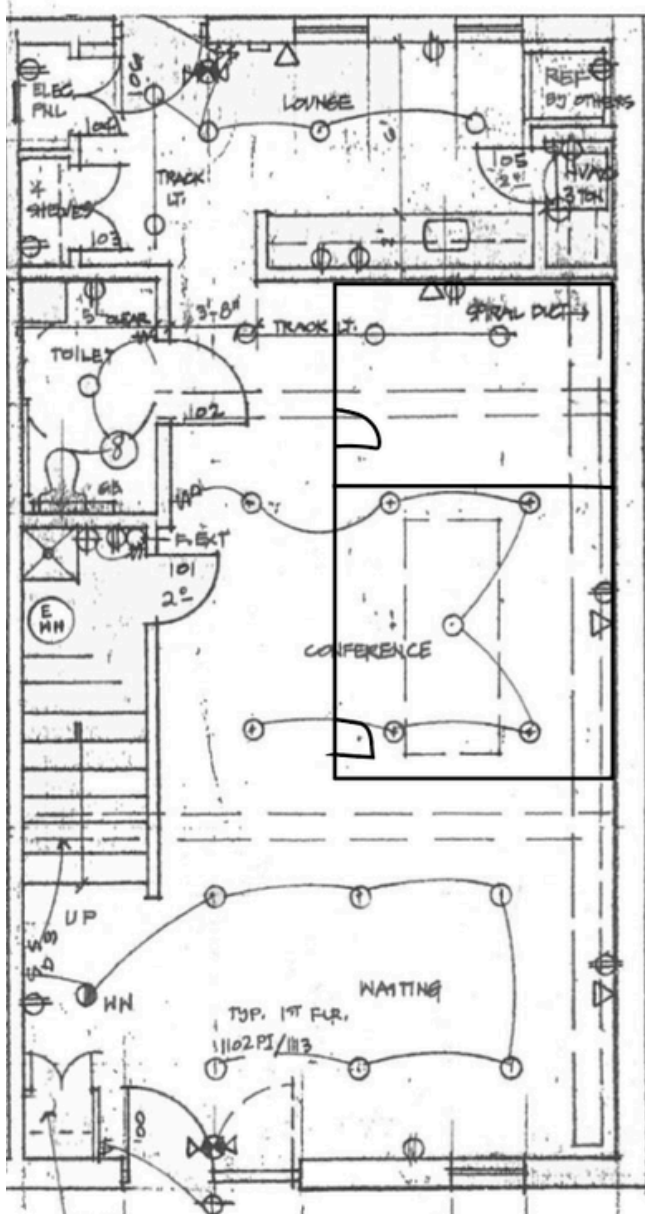
- Modern Office Space in the Historic Soulard Neighborhood
- Approximately 1,820 SF on Two Levels
- Five Offices, Separate Conference Room, Lounge Area and Kitchen
- One Parking Space Included in the Gated Parking Lot
- Private Patio Off the Kitchen
- Ideal Space for Law Firm, Counseling Practice, Non-Profit or Medical User
- Fantastic Walkability to Several Food and Coffee Options

**For Lease:**  
**\$2,100/MO**  
**Plus CAM Fees &**  
**Utilities**

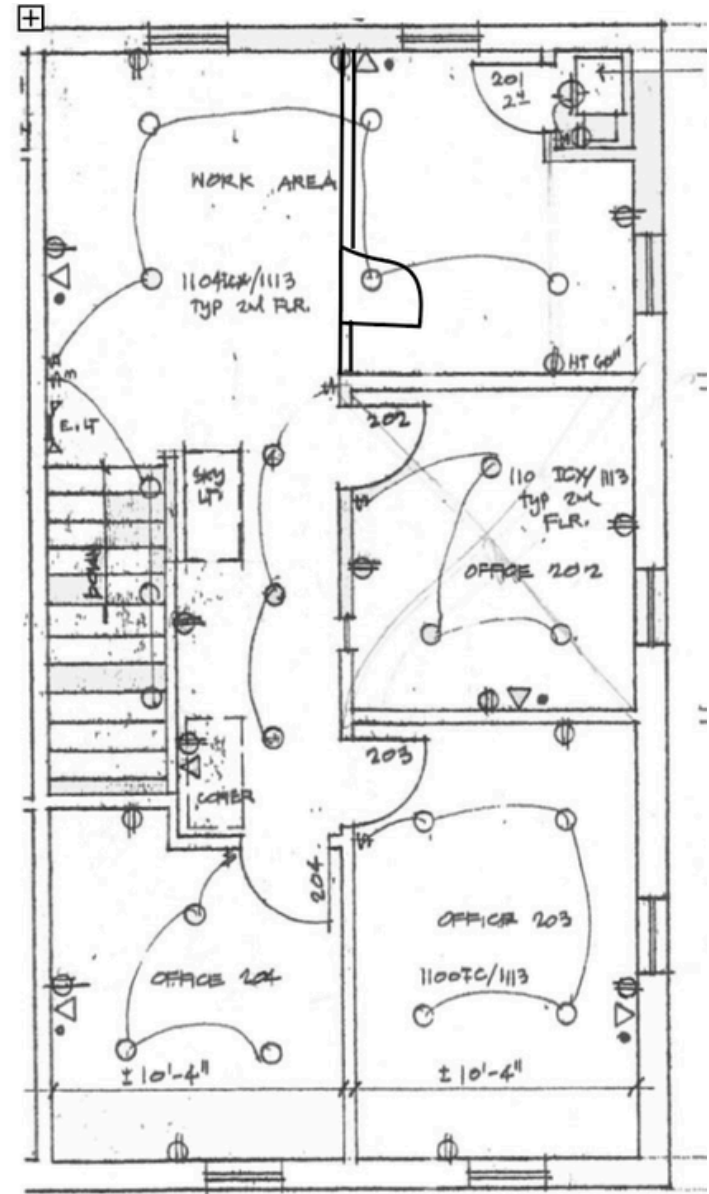




1st Floor



2nd Floor



CONTACT BROKERS FOR MORE INFO

**Mike Cromie**

314.324.0000

mike@risetothelocation.com



TOWER  
REAL ESTATE GROUP